

# HC-238H Tubular Jib Capacities

62" x 70" (1.57 x 1.78 m) Tube Boom - 30" x 36" (.75 x .91 m) Tube Jib - 360° Rotation - "ABC" + "A" Counterweights

Boom Length (feet)	Jib Length (feet)	Jib Load Radius (feet)	Jib Angle to Boom									
			0 Degrees			15 Degrees			30 Degrees			
			Boom Angle (degree)	Jib Pt. Height (feet)	Jib Capacity (lbs.)	Boom Angle (degree)	Jib Pt. Height (feet)	Jib Capacity (lbs.)	Boom Angle (degree)	Jib Pt. Height (feet)	Jib Capacity (lbs.)	
100' (30.48 m)	30	30	78.0	133.9	29,400*							
	30	35	75.7	132.7	28,800*	79.1	132.5	26,300*				
	30	40	73.4	131.3	28,100*	76.8	131.1	25,700*	79.8	129.4	22,200*	
	30	50	68.8	127.8	26,800*	72.1	127.8	24,400*	75.0	126.0	20,000*	
	30	60	64.0	123.4	25,500*	67.2	123.4	23,100*	70.1	121.6	18,300*	
	30	70	59.0	118.0	24,100*	62.2	118.0	21,700*	64.9	116.1	17,000*	
	30	80	53.7	111.3	22,700*	56.8	111.4	19,600*	59.4	109.3	15,800*	
	30	90	48.0	103.1	20,800*	51.1	103.2	17,300*	53.5	100.9	14,900*	
	30	100	41.7	93.0	18,300*	44.8	93.1	15,700*	46.9	90.4	14,100*	
	30	110	34.6	80.2	15,900*	37.5	80.2	15,300*				
30	120	25.8	63.0	15,300*								
100' (30.48 m)	40	30	78.9	143.9	26,400*							
	40	35	76.8	142.8	25,900*							
	40	40	74.7	141.5	25,300*	78.8	141.1	23,200*				
	40	50	70.4	138.2	24,200*	74.5	138.0	21,300*	78.2	135.8	16,900*	
	40	60	66.0	134.1	22,800*	70.0	134.0	19,300*	73.7	131.8	15,400*	
	40	70	61.4	129.1	20,800*	65.4	129.1	17,300*	68.9	126.7	14,000*	
	40	80	56.6	123.0	18,700*	60.6	123.1	15,600*	64.0	120.6	12,500*	
	40	90	51.6	115.6	16,500*	55.5	115.8	14,000*	58.7	113.1	11,500*	
	40	100	46.1	106.8	14,800*	50.0	107.0	12,300*	53.0	104.0	10,900*	
	40	110	40.1	96.0	13,000*	43.9	96.2	11,400*				
40	120	33.3	82.5	11,500*	36.9	82.5	10,600*					
40	130	24.8	64.4	10,600*								
100' (30.48 m)	50	30	79.6	154.0	24,000*							
	50	35	77.7	153.0	23,400*							
	50	40	75.7	151.8	22,900*							
	50	50	71.7	148.7	21,900*	76.6	148.5	19,300*				
	50	60	67.6	144.9	20,800*	72.5	144.8	17,100*	76.8	142.3	12,300*	
	50	70	63.4	140.3	18,700*	68.2	140.3	14,700*	72.4	137.7	11,200*	
	50	80	59.1	134.7	16,300*	63.8	134.8	12,300*	67.9	132.1	10,000*	
	50	90	54.5	128.0	13,800*	59.2	128.3	11,200*	63.1	125.4	8,800*	
	50	100	49.7	120.1	11,800*	54.3	120.5	9,900*	58.0	117.3	8,100*	
	50	110	44.5	110.7	10,500*	49.0	111.1	8,600*	52.5	107.6	7,500*	
50	120	38.7	99.4	9,000*	43.1	99.7	7,900*					
50	130	32.1	85.2	8,000*	36.4	85.3	7,200*					
50	140	24.0	66.3	7,200*								
100' (30.48 m)	60	35	78.4	163.3	21,200*							
	60	40	76.6	162.2	20,700*							
	60	50	72.9	159.4	19,800*	78.4	159.2	18,000*				
	60	60	69.1	155.9	18,700*	74.5	155.9	15,800*	79.6	153.1	10,800*	
	60	70	65.2	151.6	17,400*	70.6	151.7	13,400*	75.5	148.9	8,800*	
	60	80	61.2	146.5	15,000*	66.6	146.7	11,000*	71.3	143.9	7,900*	
	60	90	57.0	140.4	12,500*	62.4	140.8	8,800*	67.0	137.8	7,000*	
	60	100	52.7	133.3	9,900*	57.9	133.8	7,900*	62.4	130.6	6,100*	
	60	110	48.0	124.9	8,300*	53.2	125.5	7,000*	57.5	122.0	5,700*	
	60	120	43.0	115.0	7,300*	48.1	115.6	5,900*	52.1	111.6	5,300*	
60	130	37.4	103.1	6,200*	42.4	103.6	5,600*					
60	140	31.1	88.4	5,600*	35.9	88.7	5,100*					
60	150	23.2	68.8	5,100*								
100' (30.48m)	70	35	79.1	173.7	18,700*							
	70	40	77.4	172.7	18,200*							
	70	50	73.9	170.1	17,300*	80.0	170.1	15,700*				

# HC-238H Tubular Jib Capacities - 360° Rotation - "ABC" + "A" Counterweights

Boom Length (feet)	Jib Length (feet)	Jib Load Radius (feet)	Jib Angle to Boom								
			0 Degrees			15 Degrees			30 Degrees		
			Boom Angle (degree)	Jib Pt. Height (feet)	Jib Capacity (lbs.)	Boom Angle (degree)	Jib Pt. Height (feet)	Jib Capacity (lbs.)	Boom Angle (degree)	Jib Pt. Height (feet)	Jib Capacity (lbs.)
100' (30.48 m)	70	60	70.4	166.9	16,400*	76.4	167.1	14,600*			
	70	70	66.8	163.0	15,400*	72.7	163.3	12,900*	78.2	160.4	9,200*
	70	80	63.0	158.3	14,000*	69.0	158.7	11,100*	74.3	155.8	7,700*
	70	90	59.2	152.8	12,200*	65.1	153.4	9,300*	70.3	150.3	6,900*
	70	100	55.2	146.3	10,300*	61.0	147.0	7,700*	66.1	143.8	6,100*
	70	110	51.0	138.8	8,300*	56.8	139.6	6,900*	61.7	136.2	5,200*
	70	120	46.5	130.0	7,200*	52.2	130.9	6,000*	56.9	127.1	4,700*
	70	130	41.6	119.7	6,300*	47.3	120.5	5,000*	51.7	116.2	4,400*
	70	140	36.3	107.3	5,200*	41.8	108.1	4,600*	45.8	102.9	4,000*
	70	150	30.1	92.0	4,600*	35.5	92.5	4,200*			
	70	160	22.5	71.8	4,100*						
110' (33.53 m)	30	30	78.9	144.1	29,700*						
	30	35	76.8	143.0	29,100*	79.9	142.7	26,500*			
	30	40	74.7	141.7	28,500*	77.8	141.5	25,900*			
	30	50	70.4	138.5	27,300*	73.4	138.4	24,800*	76.2	136.6	20,400*
	30	60	66.0	134.5	26,000*	69.0	134.4	23,600*	71.6	132.6	18,800*
	30	70	61.4	129.5	24,800*	64.4	129.5	22,400*	66.9	127.6	17,400*
	30	80	56.6	123.5	23,500*	59.6	123.5	20,700*	62.0	121.5	16,300*
	30	90	51.6	116.2	22,200*	54.5	116.3	18,600*	56.8	114.1	15,300*
	30	100	46.1	107.4	20,100*	49.0	107.5	16,400*	51.1	105.1	14,600*
	30	110	40.1	96.7	17,700*	42.9	96.8	15,600*			
	30	120	33.3	83.3	15,800*	36.0	83.2	15,200*			
	30	130	24.8	65.2	15,200*						
110' (33.53 m)	40	30	79.6	154.1	26,600*						
	40	35	77.7	153.0	26,100*						
	40	40	75.7	151.8	25,600*	79.6	151.4	23,400*			
	40	50	71.7	148.8	24,500*	75.6	148.6	21,800*	79.1	146.3	17,100*
	40	60	67.6	145.0	23,500*	71.5	144.9	20,000*	74.9	142.6	15,700*
	40	70	63.4	140.4	21,700*	67.2	140.3	18,100*	70.5	138.0	14,500*
	40	80	59.1	134.8	19,800*	62.8	134.8	16,300*	66.0	132.4	13,100*
	40	90	54.5	128.2	17,800*	58.2	128.3	14,900*	61.3	125.7	11,800*
	40	100	49.7	120.3	16,000*	53.3	120.5	13,300*	56.2	117.6	11,300*
	40	110	44.5	110.9	14,300*	48.1	111.1	11,900*	50.7	107.9	10,600*
	40	120	38.7	99.6	12,500*	42.2	99.7	11,200*			
	40	130	32.1	85.4	11,400*	35.5	85.4	10,400*			
	40	140	24.0	66.6	10,500*						
110' (33.53 m)	50	35	78.4	163.2	23,700*						
	50	40	76.6	162.1	23,200*						
	50	50	72.9	159.3	22,200*	77.4	159.0	19,800*			
	50	60	69.1	155.7	21,200*	73.6	155.6	17,700*	77.7	152.9	12,600*
	50	70	65.2	151.4	19,700*	69.7	151.4	15,600*	73.7	148.7	11,500*
	50	80	61.2	146.3	17,500*	65.7	146.3	13,300*	69.5	143.6	10,400*
	50	90	57.0	140.2	15,200*	61.4	140.3	11,700*	65.2	137.4	9,300*
	50	100	52.7	133.0	12,800*	57.0	133.3	10,600*	60.6	130.2	8,400*
	50	110	48.0	124.7	11,400*	52.3	124.9	9,400*	55.7	121.6	7,900*
	50	120	43.0	114.7	10,100*	47.2	115.0	8,400*	50.4	111.2	7,300*
	50	130	37.4	102.8	8,700*	41.6	103.0	7,800*			
	50	140	31.1	88.0	7,900*	35.0	88.0	7,100*			
	50	150	23.2	68.4	7,100*						
110' (33.53 m)	60	35	79.1	173.5	21,400*						
	60	40	77.4	172.5	21,000*						
	60	50	73.9	169.8	20,000*	79.1	169.6	18,200*			

Boom Length (feet)	Jib Length (feet)	Jib Load Radius (feet)	Jib Angle to Boom								
			0 Degrees			15 Degrees			30 Degrees		
			Boom Angle (degree)	Jib Pt. Height (feet)	Jib Capacity (lbs.)	Boom Angle (degree)	Jib Pt. Height (feet)	Jib Capacity (lbs.)	Boom Angle (degree)	Jib Pt. Height (feet)	Jib Capacity (lbs.)
110' (33.53 m)	60	60	70.4	166.5	19,100*	75.5	166.5	16,400*			
	60	70	66.8	162.6	18,100*	71.9	162.6	14,200*	76.5	159.7	8,900*
	60	80	63.0	157.8	16,100*	68.1	158.0	11,900*	72.6	155.0	8,200*
	60	90	59.2	152.2	13,800*	64.2	152.5	9,600*	68.6	149.5	7,400*
	60	100	55.2	145.7	11,400*	60.2	146.1	8,300*	64.4	142.9	6,500*
	60	110	51.0	138.1	8,900*	55.9	138.6	7,500*	60.0	135.1	5,800*
	60	120	46.5	129.3	8,000*	51.3	129.8	6,600*	55.2	126.0	5,500*
	60	130	41.6	118.9	7,100*	46.4	119.4	5,800*	50.0	115.1	5,200*
	60	140	36.3	106.4	6,000*	40.9	106.9	5,500*			
	60	150	30.1	91.1	5,500*	34.6	91.2	5,000*			
	60	160	22.5	70.8	5,000*						
110' (33.53 m)	70	35	79.7	183.9	18,900*						
	70	40	78.1	182.9	18,400*						
	70	50	74.8	180.5	17,500*						
	70	60	71.5	177.5	16,700*	77.2	177.5	15,000*			
	70	70	68.1	173.8	15,800*	73.8	174.0	13,400*	79.0	171.0	9,500*
	70	80	64.7	169.4	14,700*	70.3	169.8	11,700*	75.3	166.7	7,900*
	70	90	61.1	164.3	13,100*	66.6	164.8	10,000*	71.6	161.7	7,200*
	70	100	57.4	158.3	11,300*	62.9	158.9	8,300*	67.7	155.7	6,400*
	70	110	53.5	151.4	9,500*	59.0	152.1	7,300*	63.7	148.7	5,600*
	70	120	49.4	143.5	7,800*	54.9	144.2	6,500*	59.4	140.5	4,900*
	70	130	45.1	134.2	6,900*	50.5	135.0	5,600*	54.8	130.9	4,600*
	70	140	40.4	123.4	6,000*	45.7	124.2	4,900*	49.7	119.4	4,200*
	70	150	35.2	110.5	5,000*	40.4	111.2	4,500*			
70	160	29.3	94.6	4,600*	34.2	95.0	4,100*				
70	170	21.9	73.7	4,100*							
130' (39.62 m)	30	35	78.4	163.5	29,600*						
	30	40	76.6	162.4	29,100*	79.3	162.1	26,400*			
	30	50	72.9	159.6	28,000*	75.6	159.4	25,400*	78.0	157.6	21,100*
	30	60	69.1	156.1	26,900*	71.8	156.0	24,300*	74.1	154.2	19,500*
	30	70	65.2	151.9	25,800*	67.9	151.8	23,300*	70.2	149.9	18,200*
	30	80	61.2	146.8	24,700*	63.8	146.8	22,200*	66.0	144.9	17,100*
	30	90	57.0	140.8	23,600*	59.6	140.9	20,700*	61.7	138.8	16,200*
	30	100	52.7	133.8	22,000*	55.2	133.8	18,900*	57.2	131.6	15,400*
	30	110	48.0	125.4	19,100	50.5	125.5	17,000*	52.4	123.1	14,700*
	30	120	43.0	115.6	16,700	45.5	115.6	15,800*	47.2	112.9	14,100*
	30	130	37.4	103.7	14,700	39.8	103.7	14,900			
	30	140	31.1	89.0	13,000	33.4	88.8	13,200			
	30	150	23.2	69.5	11,600						
130' (39.62 m)	40	35	79.1	173.5	26,500*						
	40	40	77.4	172.4	26,100*						
	40	50	73.9	169.8	25,100*	77.3	169.4	22,600*			
	40	60	70.4	166.5	24,200*	73.8	166.2	21,000*	76.8	163.8	16,200*
	40	70	66.8	162.5	23,200*	70.1	162.3	19,400*	73.1	159.9	15,100*
	40	80	63.0	157.7	21,600*	66.4	157.6	17,700*	69.2	155.1	14,100*
	40	90	59.2	152.1	19,900*	62.5	152.1	16,200*	65.3	149.5	12,900*
	40	100	55.2	145.6	18,100*	58.5	145.7	14,900*	61.1	142.9	11,800*
	40	110	51.0	138.0	16,400*	54.2	138.1	13,600*	56.7	135.2	11,300*
	40	120	46.5	129.2	15,000*	49.7	129.3	12,200*	52.0	126.1	10,800*
	40	130	41.6	118.8	13,400*	44.8	118.8	11,500*			
	40	140	36.3	106.3	11,900*	39.3	106.3	10,900*			
	40	150	30.1	91.0	11,200*						
40	160	22.5	70.7	10,300*							

# HC-238H Tubular Jib Capacities - 360° Rotation - "ABC" + "A" Counterweights

Boom Length (feet)	Jib Length (feet)	Jib Load Radius (feet)	Jib Angle to Boom										
			0 Degrees			15 Degrees			30 Degrees				
			Boom Angle (degree)	Jib Pt. Height (feet)	Jib Capacity (lbs.)	Boom Angle (degree)	Jib Pt. Height (feet)	Jib Capacity (lbs.)	Boom Angle (degree)	Jib Pt. Height (feet)	Jib Capacity (lbs.)		
130' (39.62 m)	50	35	79.7	183.6	24,000*								
	50	40	78.1	182.6	23,600*								
	50	50	74.8	180.1	22,700*	78.9	179.7	20,600*					
	50	60	71.5	177.0	21,800*	75.5	176.7	18,700*	79.2	173.9	13,500*		
	50	70	68.1	173.3	20,900*	72.1	173.1	16,900*	75.7	170.2	12,000*		
	50	80	64.7	168.8	19,400*	68.6	168.7	15,000*	72.1	165.8	11,100*		
	50	90	61.1	163.6	17,400*	65.0	163.6	13,000*	68.4	160.6	10,100*		
	50	100	57.4	157.5	15,400*	61.3	157.6	11,700*	64.5	154.6	9,200*		
	50	110	53.5	150.6	13,300*	57.4	150.7	10,700*	60.5	147.5	8,400*		
	50	120	49.4	142.5	11,700*	53.3	142.7	9,700*	56.3	139.2	7,900*		
	50	130	45.1	133.2	10,700*	48.9	133.4	8,600*	51.7	129.6	7,400*		
	50	140	40.4	122.3	9,500*	44.1	122.5	8,000*					
	50	150	35.2	109.3	8,400*	38.8	109.4	7,500*					
	50	160	29.3	93.4	7,700*								
50	170	21.9	72.4	7,000*									
130' (39.62 m)	60	40	78.8	192.9	21,300*								
	60	50	75.7	190.6	20,500*								
	60	60	72.5	187.7	19,700*	77.1	187.4	17,300*					
	60	70	69.3	184.2	18,800*	73.9	184.1	15,400*	78.0	181.0	9,900*		
	60	80	66.1	180.0	17,400*	70.6	180.0	13,400*	74.7	176.9	8,600*		
	60	90	62.7	175.1	15,900*	67.2	175.3	11,400*	71.2	172.1	7,900*		
	60	100	59.3	169.5	13,800*	63.8	169.8	9,300*	67.6	166.5	7,200*		
	60	110	55.7	163.1	11,700*	60.1	163.4	8,300*	63.9	160.0	6,400*		
	60	120	52.0	155.7	9,500*	56.4	156.1	7,600*	60.0	152.5	5,800*		
	60	130	48.0	147.3	8,300*	52.4	147.7	6,800*	55.8	143.7	5,600*		
	60	140	43.8	137.5	7,500*	48.1	138.0	5,900*	51.4	133.6	5,300*		
	60	150	39.3	126.2	6,600*	43.5	126.6	5,600*					
	60	160	34.3	112.8	5,800*	38.3	113.0	5,300*					
	60	170	28.5	96.3	5,400*								
60	180	21.3	74.7	5,000*									
130' (39.62 m)	70	40	79.3	203.3	18,700*								
	70	50	76.4	201.2	18,000*								
	70	60	73.4	198.5	17,200*	78.5	198.4	15,300*					
	70	70	70.4	195.2	16,400*	75.5	195.2	14,200*					
	70	80	67.3	191.3	15,500*	72.4	191.5	12,700*	77.0	188.3	8,700*		
	70	90	64.2	186.8	14,100*	69.2	187.1	11,300*	73.7	183.8	7,600*		
	70	100	61.0	181.6	12,900*	66.0	182.0	9,700*	70.4	178.6	6,900*		
	70	110	57.6	175.7	11,500*	62.6	176.2	8,200*	66.9	172.7	6,200*		
	70	120	54.2	168.9	9,800*	59.1	169.5	7,300*	63.3	165.8	5,500*		
	70	130	50.6	161.2	8,200*	55.4	161.9	6,600*	59.4	157.9	4,900*		
	70	140	46.7	152.4	7,300*	51.6	153.1	5,800*	55.4	148.8	4,600*		
	70	150	42.7	142.3	6,500*	47.4	143.0	5,000*	51.1	138.1	4,300*		
	70	160	38.3	130.5	5,600*	42.9	131.2	4,700*	46.3	125.6	4,000*		
	70	170	33.4	116.7	4,800*	37.9	117.1	4,300*					
70	180	27.7	99.7	4,500*									
70	190	20.7	77.5	4,000*									
150' (45.72 m)	30	35	79.7	183.9	29,900*								
	30	40	78.1	182.9	29,500*								
	30	50	74.8	180.4	28,500*	77.3	180.2	25,800*	79.4	178.3	21,700*		
	30	60	71.5	177.4	27,600*	73.9	177.2	24,900*	76.0	175.3	20,200*		
	30	70	68.1	173.7	26,600*	70.5	173.6	24,000*	72.6	171.6	18,900*		
	30	80	64.7	169.3	25,600*	67.0	169.2	23,100*	69.0	167.3	17,800*		
	30	90	61.1	164.2	24,700*	63.4	164.1	22,100*	65.3	162.1	16,900*		

Boom Length (feet)	Jib Length (feet)	Jib Load Radius (feet)	Jib Angle to Boom								
			0 Degrees			15 Degrees			30 Degrees		
			Boom Angle (degree)	Jib Pt. Height (feet)	Jib Capacity (lbs.)	Boom Angle (degree)	Jib Pt. Height (feet)	Jib Capacity (lbs.)	Boom Angle (degree)	Jib Pt. Height (feet)	Jib Capacity (lbs.)
150' (45.72 m)	30	100	57.4	158.2	21,400	59.7	158.2	20,700*	61.5	156.1	16,100*
	30	110	53.5	151.3	18,500	55.8	151.3	18,900	57.6	149.0	15,400*
	30	120	49.4	143.3	16,100	51.7	143.3	16,500	53.4	140.9	14,700*
	30	130	45.1	134.0	14,200	47.3	134.1	14,400	48.9	131.4	14,200*
	30	140	40.4	123.2	12,500	42.6	123.2	12,700			
	30	150	35.2	110.3	11,000	37.3	110.2	11,200			
	30	160	29.3	94.4	9,800						
	30	170	21.9	73.5	8,700						
150' (45.72 m)	40	40	78.8	192.9	26,400*						
	40	50	75.7	190.5	25,600*	78.7	190.1	23,200*			
	40	60	72.5	187.6	24,800*	75.6	187.3	21,800*	78.3	184.8	16,700*
	40	70	69.3	184.1	23,900*	72.4	183.8	20,400*	75.0	181.3	15,600*
	40	80	66.1	179.9	22,900*	69.1	179.7	18,900*	71.7	177.2	14,700*
	40	90	62.7	175.1	21,400*	65.7	175.0	17,400*	68.2	172.4	13,800*
	40	100	59.3	169.5	19,900*	62.2	169.4	16,100*	64.7	166.7	12,700*
	40	110	55.7	163.0	18,300*	58.6	163.0	15,000*	61.0	160.2	11,800*
	40	120	52.0	155.6	16,300	54.9	155.7	13,800*	57.1	152.7	11,400*
	40	130	48.0	147.2	14,300	50.9	147.2	12,600*	53.0	144.0	10,900*
	40	140	43.8	137.4	12,600	46.6	137.5	11,700*	48.6	134.0	10,400*
	40	150	39.3	126.1	11,200	42.0	126.1	11,200*			
40	160	34.3	112.6	10,000	36.9	112.5	10,200				
40	170	28.5	96.2	8,900							
150' (45.72 m)	50	40	79.3	203.0	23,900*						
	50	50	76.4	200.8	23,100*						
	50	60	73.4	198.0	22,300*	77.1	197.6	19,600*			
	50	70	70.4	194.7	21,500*	74.0	194.4	17,900*	77.2	191.5	12,400*
	50	80	67.3	190.7	20,200*	70.9	190.5	16,200*	74.1	187.6	11,600*
	50	90	64.2	186.2	18,600*	67.8	186.1	14,500*	70.8	183.0	10,700*
	50	100	61.0	180.9	17,200*	64.5	180.9	12,700*	67.5	177.8	9,900*
	50	110	57.6	174.9	15,500*	61.1	174.9	11,700*	64.1	171.7	9,000*
	50	120	54.2	168.0	13,600*	57.6	168.1	10,800*	60.5	164.8	8,400*
	50	130	50.6	160.3	12,000*	54.0	160.4	9,900*	56.7	156.8	8,000*
	50	140	46.7	151.4	11,100*	50.1	151.5	8,900*	52.7	147.7	7,500*
	50	150	42.7	141.2	10,000*	46.0	141.3	8,200*	48.4	137.1	7,100*
	50	160	38.3	129.4	8,900*	41.5	129.5	7,800*			
	50	170	33.4	115.5	8,200*	36.5	115.4	7,200*			
50	180	27.7	98.4	7,600*							
150' (45.72 m)	60	40	79.8	213.3	21,600*						
	60	50	77.1	211.2	20,900*						
	60	60	74.2	208.6	20,100*	78.4	208.2	18,000*			
	60	70	71.4	205.4	19,300*	75.5	205.2	16,400*	79.3	202.0	10,600*
	60	80	68.5	201.7	17,800*	72.6	201.6	14,600*	76.3	198.4	8,900*
	60	90	65.5	197.4	16,300*	69.6	197.4	12,800*	73.2	194.1	8,300*
	60	100	62.5	192.5	15,000*	66.5	192.6	11,000*	70.1	189.2	7,700*
	60	110	59.4	186.9	13,800*	63.4	187.0	9,100*	66.8	183.6	7,000*
	60	120	56.1	180.5	11,900*	60.1	180.7	8,300*	63.5	177.1	6,300*
	60	130	52.8	173.3	9,900*	56.7	173.6	7,700*	60.0	169.8	5,800*
	60	140	49.3	165.1	8,600*	53.2	165.5	7,000*	56.3	161.4	5,600*
	60	150	45.6	155.9	7,800*	49.4	156.2	6,200*	52.4	151.8	5,300*
	60	160	41.6	145.3	7,000*	45.4	145.7	5,800*	48.2	140.7	5,100*
	60	170	37.3	133.1	6,200*	41.0	133.4	5,500*			
	60	180	32.5	118.7	5,700*	36.2	118.8	5,200*			
	60	190	27.0	101.2	5,300*						

# HC-238H Tubular Jib Capacities - 360° Rotation - "ABC" + "A" Counterweights

Boom Length (feet)	Jib Length (feet)	Jib Load Radius (feet)	Jib Angle to Boom												
			0 Degrees			15 Degrees			30 Degrees						
			Boom Angle (degree)	Jib Pt. Height (feet)	Jib Capacity (lbs.)	Boom Angle (degree)	Jib Pt. Height (feet)	Jib Capacity (lbs.)	Boom Angle (degree)	Jib Pt. Height (feet)	Jib Capacity (lbs.)				
150' (45.72 m)	70	50	77.7	221.7	18,300*										
	70	60	75.0	219.3	17,600*	79.6	219.0	15,600*							
	70	70	72.3	216.3	16,900*	76.9	216.2	14,800*							
	70	80	69.5	212.8	16,000*	74.1	212.9	13,500*	78.3	209.5	9,200*				
	70	90	66.7	208.8	14,500*	71.3	208.9	12,200*	75.4	205.5	7,900*				
	70	100	63.8	204.2	13,200*	68.4	204.4	10,900*	72.4	200.9	7,300*				
	70	110	60.9	198.9	12,100*	65.4	199.3	9,500*	69.3	195.7	6,700*				
	70	120	57.9	193.0	11,100*	62.3	193.5	8,000*	66.2	189.7	6,100*				
	70	130	54.7	186.3	10,100*	59.2	186.9	7,400*	62.9	182.9	5,400*				
	70	140	51.5	178.8	8,600*	55.9	179.4	6,700*	59.5	175.2	4,900*				
	70	150	48.1	170.4	7,500*	52.4	171.0	6,000*	55.9	166.5	4,600*				
	70	160	44.5	160.8	6,800*	48.8	161.4	5,300*	52.1	156.5	4,400*				
	70	170	40.6	149.9	6,000*	44.9	150.4	4,800*	48.0	145.0	4,100*				
	70	180	36.4	137.3	5,200*	40.6	137.7	4,500*							
	70	190	31.8	122.5	4,700*	35.8	122.7	4,200*							
70	200	26.4	104.5	4,400*											
170' (51.82 m)	30	40	79.3	203.3	29,800*										
	30	50	76.4	201.1	29,000*	78.6	200.8	26,200*							
	30	60	73.4	198.4	28,100*	75.6	198.1	25,400*	77.5	196.2	20,700*				
	30	70	70.4	195.1	27,300*	72.6	194.9	24,500*	74.4	193.0	19,500*				
	30	80	67.3	191.2	26,400*	69.5	191.1	23,700*	71.3	189.1	18,400*				
	30	90	64.2	186.7	24,300	66.3	186.6	22,900*	68.1	184.6	17,500*				
	30	100	61.0	181.5	20,900	63.1	181.4	21,400	64.8	179.4	16,700*				
	30	110	57.6	175.5	18,000	59.7	175.5	18,400	61.4	173.3	16,000*				
	30	120	54.2	168.7	15,600	56.2	168.8	16,000	57.8	166.5	15,400*				
	30	130	50.6	161.0	13,600	52.6	161.0	13,900	54.1	158.6	14,200				
	30	140	46.7	152.2	11,900	48.7	152.2	12,200	50.2	149.6	12,400				
	30	150	42.7	142.1	10,400	44.6	142.1	10,700							
	30	160	38.3	130.3	9,200	40.2	130.3	9,400							
	30	170	33.4	116.4	8,100	35.2	116.3	8,300							
	30	180	27.7	99.5	7,100										
170' (51.82 m)	40	40	79.8	213.3	26,700*										
	40	50	77.1	211.2	26,000*	79.8	210.7	23,500*							
	40	60	74.2	208.5	25,200*	77.0	208.1	22,400*	79.5	205.6	17,100*				
	40	70	71.4	205.4	24,400*	74.1	205.0	21,100*	76.6	202.5	16,000*				
	40	80	68.5	201.7	23,700*	71.2	201.4	19,800*	73.6	198.8	15,200*				
	40	90	65.5	197.4	22,600*	68.2	197.2	18,500*	70.5	194.5	14,400*				
	40	100	62.5	192.4	20,500*	65.2	192.3	17,200*	67.4	189.6	13,600*				
	40	110	59.4	186.8	18,100	62.0	186.7	16,100*	64.2	183.9	12,600*				
	40	120	56.1	180.4	15,700	58.8	180.4	15,000*	60.9	177.5	11,800*				
	40	130	52.8	173.2	13,700	55.4	173.2	14,000*	57.4	170.2	11,400*				
	40	140	49.3	165.1	12,100	51.8	165.1	12,400	53.8	161.8	11,000*				
	40	150	45.6	155.8	10,600	48.1	155.8	10,900	49.9	152.3	10,500*				
	40	160	41.6	145.2	9,400	44.1	145.2	9,600							
	40	170	37.3	133.0	8,300	39.7	132.9	8,500							
	40	180	32.5	118.6	7,300	34.9	118.4	7,500							
40	190	27.0	101.1	6,400											
170' (51.82 m)	50	50	77.7	221.4	23,400*										
	50	60	75.0	218.9	22,700*	78.3	218.4	20,200*							
	50	70	72.3	215.8	22,000*	75.5	215.5	18,700*	78.5	212.4	13,100*				
	50	80	69.5	212.3	20,500*	72.8	212.0	17,200*	75.7	209.0	12,000*				
	50	90	66.7	208.2	18,900*	69.9	208.0	15,700*	72.8	204.9	11,200*				
50	100	63.8	203.5	17,500*	67.0	203.4	14,100*	69.8	200.3	10,500*					

Boom Length (feet)	Jib Length (feet)	Jib Load Radius (feet)	Jib Angle to Boom								
			0 Degrees			15 Degrees			30 Degrees		
			Boom Angle (degree)	Jib Pt. Height (feet)	Jib Capacity (lbs.)	Boom Angle (degree)	Jib Pt. Height (feet)	Jib Capacity (lbs.)	Boom Angle (degree)	Jib Pt. Height (feet)	Jib Capacity (lbs.)
170' (51.82 m)	50	110	60.9	198.2	16,300*	64.1	198.2	12,500*	66.8	194.9	9,700*
	50	120	57.9	192.2	15,100*	61.0	192.2	11,600*	63.7	188.9	8,900*
	50	130	54.7	185.5	13,900	57.9	185.5	10,800*	60.4	182.1	8,400*
	50	140	51.5	177.9	12,200	54.6	178.0	10,000*	57.0	174.3	8,000*
	50	150	48.1	169.4	10,700	51.1	169.5	9,100*	53.5	165.6	7,600*
	50	160	44.5	159.7	9,500	47.5	159.8	8,400*	49.7	155.6	7,200*
	50	170	40.6	148.8	8,400	43.6	148.8	8,000*			
	50	180	36.4	136.1	7,400	39.3	136.1	7,500*			
	50	190	31.8	121.3	6,600	34.6	121.1	6,800			
	50	200	26.4	103.2	5,800						
170' (51.82 m)	60	50	78.2	231.7	21,200*						
	60	60	75.6	229.3	20,500*	79.4	228.9	18,300*			
	60	70	73.1	226.5	19,800*	76.8	226.1	17,200*			
	60	80	70.4	223.1	18,100*	74.2	222.9	15,600*	77.6	219.5	9,600*
	60	90	67.8	219.2	16,600*	71.5	219.1	14,000*	74.8	215.7	8,600*
	60	100	65.0	214.8	15,200*	68.8	214.8	12,300*	72.0	211.3	8,100*
	60	110	62.3	209.8	14,100*	66.0	209.9	10,600*	69.1	206.3	7,500*
	60	120	59.4	204.2	13,000*	63.1	204.3	8,900*	66.2	200.7	6,900*
	60	130	56.5	197.9	12,100*	60.1	198.1	8,300*	63.1	194.3	6,300*
	60	140	53.4	190.8	10,300*	57.0	191.0	7,700*	60.0	187.1	5,800*
	60	150	50.3	182.9	8,800*	53.8	183.2	7,100*	56.7	179.0	5,600*
	60	160	46.9	174.0	8,100*	50.5	174.3	6,400*	53.2	169.8	5,400*
	60	170	43.4	164.0	7,400*	46.9	164.3	5,900*	49.5	159.4	5,100*
	60	180	39.7	152.7	6,700*	43.1	152.9	5,600*			
60	190	35.6	139.7	5,900*	38.9	139.8	5,300*				
60	200	31.0	124.4	5,600*	34.3	124.3	5,000*				
60	210	25.8	105.9	5,200							
170' (51.82 m)	70	50	78.7	242.1	18,600*						
	70	60	76.2	239.9	17,900*						
	70	70	73.8	237.2	17,300*	78.0	237.0	15,200*			
	70	80	71.3	234.1	16,200*	75.5	234.0	14,200*	79.3	230.4	9,500*
	70	90	68.7	230.4	14,700*	72.9	230.4	13,000*	76.7	226.9	8,500*
	70	100	66.1	226.3	13,500*	70.3	226.4	11,800*	74.0	222.8	7,700*
	70	110	63.5	221.6	12,400*	67.7	221.8	10,500*	71.3	218.1	7,100*
	70	120	60.8	216.3	11,400*	64.9	216.6	9,300*	68.5	212.8	6,600*
	70	130	58.0	210.4	10,500*	62.1	210.7	7,900*	65.6	206.8	6,000*
	70	140	55.2	203.8	9,700*	59.3	204.2	7,400*	62.6	200.1	5,400*
	70	150	52.2	196.4	8,900*	56.3	196.9	6,800*	59.6	192.6	4,900*
	70	160	49.1	188.2	7,800*	53.1	188.7	6,100*	56.3	184.1	4,500*
	70	170	45.9	179.0	7,100*	49.9	179.6	5,500*	52.9	174.6	4,100*
	70	180	42.5	168.7	6,400*	46.4	169.3	4,900*	49.3	163.8	3,600*
70	190	38.8	157.1	5,700*	42.6	157.5	4,600*				
70	200	34.8	143.7	4,900*	38.6	144.0	4,400*				
70	210	30.4	128.1	4,600*	34.0	128.1	4,100*				
70	220	25.3	109.1	4,300*							
190' (57.91 m)	30	50	77.7	221.6	29,300*	79.6	221.3	26,500*			
	30	60	75.0	219.2	28,600*	76.9	218.9	25,700*	78.7	216.9	21,200*
	30	70	72.3	216.2	27,800*	74.2	216.0	25,000*	75.9	214.0	20,000*
	30	80	69.5	212.7	27,000*	71.4	212.5	24,200*	73.1	210.6	19,000*
	30	90	66.7	208.7	23,700	68.6	208.6	23,500*	70.3	206.5	18,100*
	30	100	63.8	204.1	20,300	65.7	204.0	20,900	67.3	201.9	17,300*
	30	110	60.9	198.8	17,400	62.8	198.7	17,900	64.3	196.6	16,600*
	30	120	57.9	192.9	15,000	59.7	192.8	15,400	61.2	190.6	15,800

# HC-238H Tubular Jib Capacities - 360° Rotation - "ABC" + "A" Counterweights

Boom Length (feet)	Jib Length (feet)	Jib Load Radius (feet)	Jib Angle to Boom								
			0 Degrees			15 Degrees			30 Degrees		
			Boom Angle (degree)	Jib Pt. Height (feet)	Jib Capacity (lbs.)	Boom Angle (degree)	Jib Pt. Height (feet)	Jib Capacity (lbs.)	Boom Angle (degree)	Jib Pt. Height (feet)	Jib Capacity (lbs.)
190' (57.91 m)	30	130	54.7	186.2	13,000	56.6	186.2	13,400	58.0	183.9	13,700
	30	140	51.5	178.7	11,300	53.3	178.7	11,600	54.7	176.2	11,900
	30	150	48.1	170.2	9,900	49.9	170.2	10,200	51.2	167.6	10,400
	30	160	44.5	160.6	8,600	46.2	160.6	8,900	47.5	157.7	9,000
	30	170	40.6	149.7	7,500	42.4	149.6	7,700			
	30	180	36.4	137.1	6,500	38.1	136.9	6,700			
	30	190	31.8	122.3	5,700	33.4	122.0	5,800			
	30	200	26.4	104.3	4,900						
190' (57.91 m)	40	50	78.2	231.7	26,300*						
	40	60	75.6	229.3	25,600*	78.2	228.8	22,900*			
	40	70	73.1	226.4	24,900*	75.6	226.0	21,800*	77.8	223.4	16,400*
	40	80	70.4	223.1	24,200*	72.9	222.7	20,600*	75.1	220.1	15,600*
	40	90	67.8	219.2	23,400*	70.2	218.9	19,400*	72.4	216.3	14,800*
	40	100	65.0	214.8	20,500	67.5	214.5	18,200*	69.6	211.8	14,100*
	40	110	62.3	209.7	17,500	64.7	209.6	17,000*	66.8	206.8	13,400*
	40	120	59.4	204.1	15,100	61.8	204.0	15,700	63.8	201.2	12,400*
	40	130	56.5	197.8	13,100	58.9	197.7	13,700	60.8	194.8	11,400*
	40	140	53.4	190.7	11,500	55.8	190.7	11,900	57.7	187.6	10,100*
	40	150	50.3	182.8	10,000	52.6	182.8	10,400	54.4	179.5	9,000*
	40	160	46.9	173.9	8,800	49.3	173.9	9,100	51.0	170.5	8,200*
	40	170	43.4	163.9	7,700	45.7	163.9	8,000	47.3	160.2	7,300*
	40	180	39.7	152.6	6,700	41.9	152.5	7,000			
	40	190	35.6	139.6	5,800	37.8	139.4	6,100			
	40	200	31.0	124.3	5,100						
40	210	25.8	105.8	4,400							
190' (57.91 m)	50	50	78.7	241.8	23,700*						
	50	60	76.2	239.5	23,100*	79.3	239.0	20,700*			
	50	70	73.8	236.8	22,400*	76.8	236.3	19,400*	79.5	233.2	13,600*
	50	80	71.3	233.6	20,500*	74.3	233.2	18,100*	76.9	230.1	12,300*
	50	90	68.7	229.9	18,900*	71.7	229.6	16,700*	74.3	226.4	11,600*
	50	100	66.1	225.7	17,600*	69.1	225.4	15,200*	71.7	222.2	11,000*
	50	110	63.5	220.9	16,300*	66.5	220.7	13,800*	69.0	217.5	10,300*
	50	120	60.8	215.5	15,200*	63.7	215.4	12,300*	66.2	212.1	9,600*
	50	130	58.0	209.6	13,300	60.9	209.5	11,600*	63.3	206.1	8,800*
	50	140	55.2	202.9	11,600	58.1	202.9	10,900*	60.4	199.4	8,000*
	50	150	52.2	195.5	10,100	55.1	195.5	10,100*	57.3	191.8	7,100*
	50	160	49.1	187.2	8,900	52.0	187.3	9,300	54.1	183.4	6,400*
	50	170	45.9	178.0	7,800	48.7	178.1	8,200	50.7	173.9	5,700*
	50	180	42.5	167.7	6,800	45.2	167.7	7,200			
	50	190	38.8	155.9	6,000	41.5	155.9	6,300			
	50	200	34.8	142.5	5,200	37.5	142.4	5,400			
50	210	30.4	126.8	4,500							
50	220	25.3	107.8	3,900							
190' (57.91 m)	60	50	79.2	252.1	21,400*						
	60	60	76.8	249.9	20,800*						
	60	70	74.4	247.3	19,800*	77.9	246.9	17,400*			
	60	80	72.0	244.3	18,100*	75.5	243.9	16,100*	78.6	240.5	10,200*
	60	90	69.6	240.7	16,700*	73.1	240.5	14,900*	76.2	237.0	8,900*
	60	100	67.2	236.7	15,400*	70.6	236.6	13,400*	73.6	233.1	8,400*
	60	110	64.6	232.2	14,200*	68.1	232.1	11,900*	71.0	228.6	7,900*
	60	120	62.1	227.2	13,100*	65.5	227.2	10,300*	68.4	223.5	7,300*
60	130	59.5	221.5	12,200*	62.8	221.6	8,900*	65.7	217.8	6,800*	
60	140	56.8	215.2	11,400*	60.1	215.4	8,300*	62.9	211.5	6,200*	



Boom Length (feet)	Jib Length (feet)	Jib Load Radius (feet)	Jib Angle to Boom								
			0 Degrees			15 Degrees			30 Degrees		
			Boom Angle (degree)	Jib Pt. Height (feet)	Jib Capacity (lbs.)	Boom Angle (degree)	Jib Pt. Height (feet)	Jib Capacity (lbs.)	Boom Angle (degree)	Jib Pt. Height (feet)	Jib Capacity (lbs.)
190' (57.91 m)	60	150	54.0	208.3	10,200	57.3	208.5	7,800*	60.0	204.4	5,700*
	60	160	51.1	200.6	8,900*	54.4	200.8	7,200*	57.0	196.5	5,100*
	60	170	48.1	192.0	7,900	51.3	192.2	6,600*	53.8	187.7	4,500*
	60	180	44.9	182.5	6,900	48.1	182.7	5,900*	50.5	177.8	4,100*
	60	190	41.6	171.8	6,100	44.7	172.0	5,700*	47.0	166.7	3,700*
	60	200	38.0	159.7	5,300	41.1	159.8	5,500*			
	60	210	34.1	145.9	4,600	37.1	145.9	4,900			
	60	220	29.8	129.8	4,000						
	60	230	24.7	110.4	3,400						
190' (57.91 m)	70	50	79.6	262.5	18,800*						
	70	60	77.3	260.4	18,200*						
	70	70	75.1	258.0	17,600*	79.0	257.7	15,400*			
	70	80	72.8	255.1	16,300*	76.7	254.9	14,300*			
	70	90	70.4	251.8	14,800*	74.3	251.7	13,200*	77.8	248.0	9,000*
	70	100	68.1	248.0	13,600*	71.9	248.0	12,200*	75.4	244.2	7,900*
	70	110	65.7	243.7	12,500*	69.5	243.8	11,300*	72.9	240.0	7,400*
	70	120	63.2	238.9	11,500*	67.1	239.1	10,200*	70.4	235.2	6,800*
	70	130	60.7	233.6	10,600*	64.6	233.8	9,100*	67.8	229.9	5,900*
	70	140	58.2	227.7	9,900*	62.0	228.0	7,900*	65.2	223.9	5,200*
	70	150	55.6	221.2	9,100*	59.3	221.5	7,400*	62.4	217.3	4,600*
	70	160	52.8	213.9	8,500*	56.6	214.4	6,800*	59.6	209.9	4,100*
	70	170	50.0	206.0	7,900*	53.7	206.4	6,300*	56.6	201.7	3,600*
	70	180	47.1	197.1	7,000	50.7	197.6	5,700*	53.6	192.6	3,300*
	70	190	44.0	187.3	6,100	47.6	187.8	5,000*	50.3	182.4	2,900*
	70	200	40.7	176.3	5,400	44.3	176.7	4,800*	46.8	170.8	2,700*
		70	210	37.2	164.0	4,700	40.7	164.3	4,400*		
	70	220	33.4	149.8	4,100	36.8	150.0	4,100*			
	70	230	29.2	133.4	3,500	32.5	133.2	3,700			
	70	240	24.3	113.5	3,000						
210' (64.01 m)	30	50	78.7	242.1	29,600*						
	30	60	76.2	239.8	28,900*	78.1	239.5	26,000*	79.7	237.5	21,600*
	30	70	73.8	237.1	28,200*	75.6	236.9	25,300*	77.2	234.9	20,500*
	30	80	71.3	234.0	26,500*	73.1	233.7	24,700*	74.6	231.8	19,500*
	30	90	68.7	230.3	23,100	70.5	230.1	22,700*	72.0	228.1	18,600*
	30	100	66.1	226.1	19,700	67.9	226.0	19,400*	69.4	224.0	16,900*
	30	110	63.5	221.4	16,800	65.3	221.3	17,400	66.7	219.2	15,000*
	30	120	60.8	216.1	14,400	62.6	216.1	14,900	64.0	213.9	13,100*
	30	130	58.0	210.2	12,400	59.8	210.2	12,800	61.1	207.9	11,700*
	30	140	55.2	203.6	10,700	56.9	203.6	11,100	58.2	201.2	10,500*
	30	150	52.2	196.2	9,300	53.9	196.2	9,600	55.2	193.8	9,400*
	30	160	49.1	188.0	8,000	50.8	188.0	8,300	52.0	185.4	8,500
	30	170	45.9	178.8	6,900	47.5	178.8	7,200	48.7	176.1	7,400
	30	180	42.5	168.5	5,900	44.1	168.5	6,200			
	30	190	38.8	156.9	5,100	40.4	156.8	5,300			
30	200	34.8	143.5	4,300	36.4	143.3	4,500				
	30	210	30.4	127.8	3,600						
	30	220	25.3	108.9	3,000						
210' (64.01 m)	40	50	79.2	252.1	26,500*						
	40	60	76.8	249.9	25,900*	79.1	249.4	23,300*			
	40	70	74.4	247.3	25,300*	76.8	246.8	22,300*	78.8	244.2	16,700*
	40	80	72.0	244.2	24,600*	74.3	243.8	21,000*	76.4	241.2	15,900*
	40	90	69.6	240.7	21,000*	71.9	240.3	19,500*	73.9	237.7	15,200*
	40	100	67.2	236.7	18,900*	69.4	236.4	17,400*	71.4	233.7	14,300*
	40	110	64.6	232.2	16,900	66.9	231.9	15,400*	68.8	229.2	12,500*

# HC-238H Tubular Jib Capacities - 360° Rotation - "ABC" + "A" Counterweights

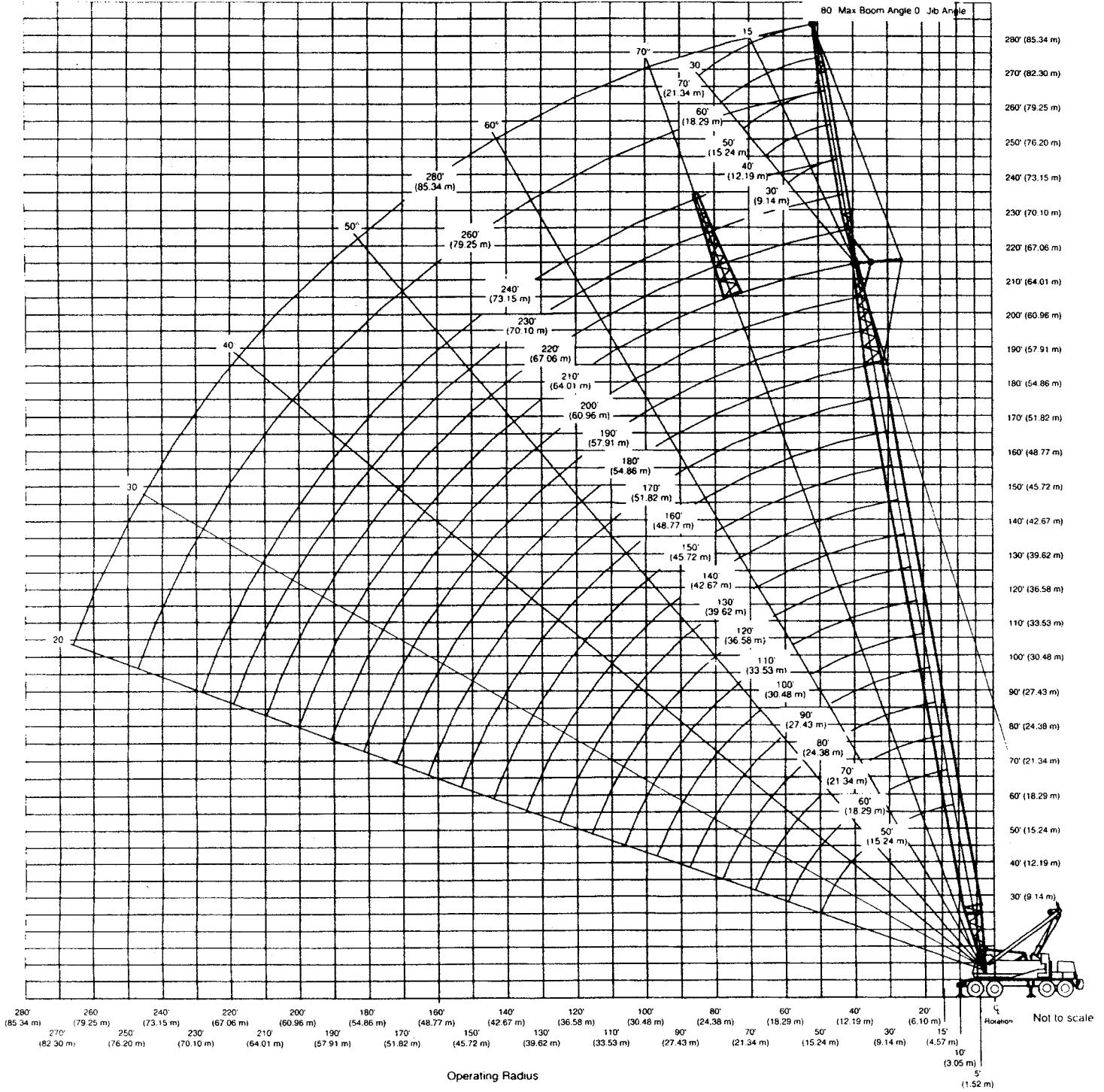
Boom Length (feet)	Jib Length (feet)	Jib Load Radius (feet)	Jib Angle to Boom								
			0 Degrees			15 Degrees			30 Degrees		
			Boom Angle (degree)	Jib Pt. Height (feet)	Jib Capacity (lbs.)	Boom Angle (degree)	Jib Pt. Height (feet)	Jib Capacity (lbs.)	Boom Angle (degree)	Jib Pt. Height (feet)	Jib Capacity (lbs.)
210' (64.01 m)	40	120	62.1	227.1	14,500	64.3	226.9	14,000*	66.2	224.1	11,000*
	40	130	59.5	221.4	12,500	61.7	221.3	12,500*	63.5	218.4	9,700*
	40	140	56.8	215.2	10,900	59.0	215.1	11,200*	60.7	212.1	8,600*
	40	150	54.0	208.2	9,400	56.2	208.1	9,900	57.9	205.0	7,800*
	40	160	51.1	200.5	8,100	53.3	200.4	8,600	54.9	197.2	6,900*
	40	170	48.1	191.9	7,100	50.2	191.9	7,400	51.8	188.4	6,200*
	40	180	44.9	182.4	6,100	47.0	182.3	6,400	48.5	178.6	5,600*
	40	190	41.6	171.7	5,200	43.7	171.6	5,500			
	40	200	38.0	159.6	4,500	40.0	159.5	4,700			
	40	210	34.1	145.8	3,800	36.1	145.6	4,000			
	40	220	29.8	129.7	3,100						
40	230	24.7	110.2	2,600							
210' (64.01 m)	50	50	79.6	262.2	24,000*						
	50	60	77.3	260.1	23,400*						
	50	70	75.1	257.6	22,700*	77.8	257.0	19,500*			
	50	80	72.8	254.6	20,300*	75.5	254.2	18,200*	78.0	251.0	12,800*
	50	90	70.4	251.3	18,800*	73.2	250.9	16,900*	75.6	247.7	12,000*
	50	100	68.1	247.4	17,300*	70.8	247.1	15,700*	73.2	243.9	11,400*
	50	110	65.7	243.1	15,700*	68.4	242.8	14,000*	70.8	239.6	10,400*
	50	120	63.2	238.2	14,000*	66.0	238.1	12,500*	68.3	234.7	8,900*
	50	130	60.7	232.9	12,700	63.4	232.7	11,000*	65.7	229.3	7,900*
	50	140	58.2	226.9	11,000	60.9	226.8	9,900*	63.1	223.3	7,100*
	50	150	55.6	220.3	9,500	58.2	220.3	8,800*	60.3	216.7	6,200*
	50	160	52.8	213.1	8,300	55.5	213.1	7,900*	57.5	209.3	5,600*
	50	170	50.0	205.0	7,200	52.6	205.0	7,100*	54.6	201.1	5,000*
	50	180	47.1	196.1	6,200	49.7	196.2	6,500*	51.6	192.0	4,400*
	50	190	44.0	186.3	5,300	46.5	186.3	5,700	48.3	181.8	4,000*
	50	200	40.7	175.2	4,600	43.2	175.2	4,900			
	50	210	37.2	162.8	3,900	39.7	162.7	4,200			
50	220	33.4	148.6	3,300	35.8	148.4	3,500				
50	230	29.2	132.1	2,700							
50	240	24.3	112.2	2,200							
210' (64.01 m)	60	50	80.0	272.5	21,600*						
	60	60	77.8	270.5	21,100*						
	60	70	75.6	268.1	19,600*	78.9	267.5	17,200*			
	60	80	73.4	265.2	18,000*	76.6	264.8	16,000*	79.5	261.3	10,800*
	60	90	71.2	262.0	16,500*	74.4	261.7	14,800*	77.3	258.1	9,400*
	60	100	68.9	258.3	15,200*	72.1	258.1	13,800*	74.9	254.5	8,600*
	60	110	66.6	254.2	14,100*	69.8	254.0	12,400*	72.6	250.4	8,200*
	60	120	64.3	249.6	12,900*	67.5	249.5	10,900*	70.2	245.8	7,400*
	60	130	61.9	244.5	11,500*	65.1	244.5	9,700*	67.7	240.7	6,500*
	60	140	59.5	238.8	10,400*	62.6	238.9	8,600*	65.2	235.0	5,700*
	60	150	57.0	232.6	9,300*	60.1	232.7	7,800*	62.6	228.7	5,100*
	60	160	54.4	225.7	8,400	57.5	225.9	6,900*	60.0	221.7	4,500*
	60	170	51.8	218.2	7,300	54.8	218.4	6,300*	57.2	214.0	4,000*
	60	180	49.0	209.9	6,300	52.0	210.1	5,700*	54.4	205.5	3,600*
	60	190	46.2	200.7	5,400	49.1	200.9	5,100*	51.3	196.0	3,300*
	60	200	43.1	190.5	4,700	46.1	190.7	4,700*	48.2	185.5	2,900*
	60	210	39.9	179.2	4,000	42.8	179.3	4,300*			
60	220	36.5	166.4	3,400	39.4	166.5	3,700				
60	230	32.8	151.9	2,800	35.5	151.7	3,100				
60	240	28.6	135.0	2,300							
210' (64.01 m)	70	60	78.2	280.9	18,500*						
	70	70	76.1	278.6	17,700*	79.8	278.2	15,400*			

Boom Length (feet)	Jib Length (feet)	Jib Load Radius (feet)	Jib Angle to Boom								
			0 Degrees			15 Degrees			30 Degrees		
			Boom Angle (degree)	Jib Pt. Height (feet)	Jib Capacity (lbs.)	Boom Angle (degree)	Jib Pt. Height (feet)	Jib Capacity (lbs.)	Boom Angle (degree)	Jib Pt. Height (feet)	Jib Capacity (lbs.)
210' (64.01 m)	70	80	74.0	276.0	16,100*	77.7	275.7	14,200*			
	70	90	71.9	272.9	14,800*	75.5	272.7	13,100*	78.8	268.9	9,300*
	70	100	69.7	269.4	13,600*	73.3	269.3	12,100*	76.5	265.5	8,200*
	70	110	67.5	265.5	12,500*	71.1	265.5	10,800*	74.3	261.6	7,100*
	70	120	65.3	261.1	11,500*	68.9	261.2	9,600*	72.0	257.3	6,100*
	70	130	63.0	256.3	10,600*	66.6	256.4	8,500*	69.6	252.4	5,400*
	70	140	60.7	250.9	9,400*	64.2	251.1	7,600*	67.2	247.0	4,700*
	70	150	58.3	245.0	8,400*	61.8	245.3	6,800*	64.8	241.1	4,100*
	70	160	55.9	238.5	7,600*	59.4	238.9	6,000*	62.2	234.5	3,600*
	70	170	53.4	231.4	6,900*	56.8	231.8	5,500*	59.6	227.3	3,300*
	70	180	50.8	223.6	6,300*	54.2	224.1	4,900*	56.9	219.3	2,900*
	70	190	48.1	215.1	5,500	51.5	215.5	4,500*	54.1	210.5	2,600*
	70	200	45.3	205.6	4,700	48.6	206.1	4,000*	51.1	200.7	2,400*
	70	210	42.3	195.2	4,100	45.6	195.6	3,700*	48.0	189.7	2,100*
	70	220	39.2	183.6	3,400	42.5	183.9	3,400*			
	70	230	35.8	170.6	2,900	39.0	170.7	3,100*			
	70	240	32.2	155.7	2,300	35.3	155.7	2,600			

## HC-238H Jib Capacity Notes

- Capacities are shown in pounds and are the maximum allowable. Capacities are based on machine standing level on firm supporting surface under ideal job conditions. Capacities are not more than 85% of the tipping loads unless marked with an asterisk (\*).
  - Asterisk indicates capacities are based on factors other than those which would cause a tipping condition.
- Capacities are for 360° swing on five outrigger jacks.
- Capacities are limited to a Link-Belt 62" x 70" (1.57 x 1.78 m) open throat tubular boom, live mast and a Link-Belt 15-ton (13.6 t), 30" x 36" (.76 x .91 m) cross section tubular jib with a 12' 7-5/8" (3.85 m) high jib strut properly assembled.
- Do not swing over side until all four outrigger beams are fully extended, all five jacks are extended, all tires are clear of the ground and machine is properly leveled on a firm supporting surface.
- Two parts of 7/8" (22 mm) diameter type "N" or "RB" wire rope is required for maximum lift.
- Capacities are for 30' (9.14 m), 40' (12.19 m), 50' (15.24 m), 60' (18.29 m), and 70' (21.34 m) jib lengths only.
- A jib cannot be used on the open throat boom that is longer than 210' (64.01 m).
- The least stable condition is over the side.
- A deduction must be made from the jib capacities for weight of hook block, hook, sling, grapple, load weighing devices, etc.
- When using main hook, while jib is attached, reduce boom capacities by the following values:
  - 30' (9.14 m) jib - 2,200 lbs. (998 kg)
  - 40' (12.19 m) jib - 2,500 lbs. (1 134 kg)
  - 50' (15.24 m) jib - 2,900 lbs. (1 315 kg)
  - 60' (18.29 m) jib - 3,200 lbs. (1 452 kg)
  - 70' (21.34 m) jib - 3,500 lbs. (1 588 kg)
- Refer to all notes in applicable Crane Rating Manual in addition to these notes.
- Capacities apply only to the machine as originally manufactured and normally equipped by Link-Belt Construction Equipment Company.

# HC-238H Tube Boom + Jib Working Range



**Gibbons Erectors, Inc.**

8019 Towhee Road  
Parker, CO 80134

Link-Belt Construction Equipment Company Lexington, Kentucky

A unit of Sumitomo Construction Machinery Co., Ltd.

© Link-Belt is a registered trademark. Copyright 1997. All rights reserved. We are constantly improving our products and therefore reserve the right to change designs and specifications.