

LS-248H II Tubular Jib Capacities

Jib Capacity Base Rating - 40,000 lb. (50' + 30' @ 18' radius)

18 144 kg (15.24 m + 9.14 m @ 5.48 m radius)

68" x 80" (1.73 x 2.03 m) Tube Boom - 24" x 32" (.61 x .81 m) Tube Jib - 360° Rotation

Boom Length (feet)	Jib Length (feet)	Jib Load Radius (feet)	Jib Angle to Boom								
			5 Degrees			15 Degrees			25 Degrees		
			Boom Angle (degree)	Jib Pt. Height (feet)	ABC+ A Cwt. (lbs.)	Boom Angle (degree)	Jib Pt. Height (feet)	ABC+ A Cwt. (lbs.)	Boom Angle (degree)	Jib Pt. Height (feet)	ABC+ A Cwt. (lbs.)
60	40	25	79.7	107.5	36,000*						
60	40	30	76.8	106.3	36,000*	80.6	105.5	35,800*			
60	40	35	73.9	104.8	36,000*	77.7	104.0	35,400*	81.2	102.5	34,600*
60	40	40	70.9	103.0	35,800*	74.7	102.3	35,000*	78.2	100.7	33,400*
60	40	50	64.8	98.6	35,000*	68.5	97.7	34,500*	71.9	96.1	29,000*
60	40	60	58.3	92.7	34,400*	61.9	91.8	32,000*	65.2	90.0	25,700*
60	40	70	51.3	85.1	32,100*	54.8	84.1	28,200*	57.9	82.2	23,200*
60	40	80	43.4	75.2	28,000*	46.8	74.1	25,300*	49.7	71.8	22,600*
60	40	90	34.0	61.8	24,900*	37.2	60.4	23,100*			
60	60	30	79.8	126.9	26,800*						
60	60	35	77.4	125.7	26,600*						
60	60	40	75.0	124.2	26,400*	79.7	123.2	25,700*			
60	60	50	70.0	120.6	25,700*	74.7	119.6	24,500*	79.2	117.5	22,500*
60	60	60	64.8	115.9	24,600*	69.5	114.8	23,500*	73.9	112.7	20,000*
60	60	70	59.4	110.0	23,600*	64.0	108.9	22,300*	68.3	106.7	17,800*
60	60	80	53.6	102.8	22,500*	58.1	101.6	19,700*	62.3	99.2	16,100*
60	60	90	47.3	93.8	21,000*	51.7	92.5	17,700*	55.7	89.8	14,700*
60	60	100	40.2	82.4	18,800*	44.5	80.9	16,100*	48.2	77.7	13,600*
60	60	110	31.7	67.3	17,000*	35.8	65.3	14,900*			
60	80	30	82.0	147.3	17,900*						
60	80	35	79.9	146.2	17,600*						
60	80	40	77.9	145.0	17,300*						
60	80	50	73.6	141.9	16,700*	79.1	140.8	15,900*			
60	80	60	69.3	138.0	15,900*	74.7	136.9	15,000*	80.0	134.5	14,200*
60	80	70	64.8	133.2	15,000*	70.2	132.0	14,200*	75.4	129.6	13,700*
60	80	80	60.2	127.4	14,200*	65.5	126.1	13,700*	70.6	123.6	12,400*
60	80	90	55.3	120.3	13,700*	60.5	119.0	13,100*	65.5	116.3	11,300*
60	80	100	50.0	111.9	13,100*	55.2	110.4	12,500*	60.0	107.5	10,300*
60	80	110	44.2	101.6	12,400*	49.3	100.0	11,600*	54.0	96.7	9,600*
60	80	120	37.7	88.9	11,800*	42.7	87.0	10,700*	47.0	83.2	9,000*
60	80	130	29.9	72.2	11,300*						
60	100	35	81.8	166.7	9,900*						
60	100	40	80.0	165.6	9,700*						
60	100	50	76.3	162.9	9,100*						
60	100	60	72.6	159.6	8,500*	78.6	158.3	8,100*			
60	100	70	68.8	155.5	8,100*	74.8	154.2	7,700*	80.6	151.6	7,400*
60	100	80	64.9	150.5	7,700*	70.8	149.2	7,400*	76.5	146.5	7,100*
60	100	90	60.8	144.7	7,400*	66.7	143.3	7,100*	72.3	140.5	6,800*
60	100	100	56.5	137.8	7,100*	62.3	136.4	6,800*	67.9	133.5	6,500*
60	100	110	52.0	129.8	6,800*	57.8	128.2	6,500*	63.2	125.1	6,200*
60	100	120	47.1	120.3	6,400*	52.8	118.6	6,100*	58.1	115.2	5,700*
60	100	130	41.7	108.9	6,100*	47.4	107.0	5,600*	52.5	103.2	4,900*
60	100	140	35.7	94.9	5,400*	41.2	92.8	4,800*	46.0	88.3	4,100*
60	100	150	28.4	76.9	4,400*						
80	40	25	81.4	127.9	36,000*						

LS-248H II Tubular Jib Capacities

Boom Length (feet)	Jib Length (feet)	Jib Load Radius (feet)	Jib Angle to Boom								
			5 Degrees			15 Degrees			25 Degrees		
			Boom Angle (deg)	Jib Pt. Height (feet)	ABC+ A Cwt. (lbs.)	Boom Angle (deg)	Jib Pt. Height (feet)	ABC+ A Cwt. (lbs.)	Boom Angle (deg)	Jib Pt. Height (feet)	ABC+ A Cwt. (lbs.)
80	40	30	79.0	126.9	36,000*						
80	40	35	76.6	125.7	36,000*	79.8	124.8	35,700*			
80	40	40	74.2	124.2	36,000*	77.3	123.4	35,300*	80.3	121.6	34,600*
80	40	50	69.2	120.6	35,600*	72.3	119.7	34,700*	75.2	117.9	31,000*
80	40	60	64.0	115.9	34,900*	67.1	115.0	34,400*	69.9	113.1	27,700*
80	40	70	58.6	110.1	34,500*	61.6	109.1	31,700*	64.3	107.1	25,200*
80	40	80	52.8	102.8	33,100*	55.7	101.7	28,500*	58.3	99.6	23,200*
80	40	90	46.5	93.8	29,400*	49.3	92.6	26,000*	51.8	90.3	22,500*
80	40	100	39.4	82.4	26,400*	42.1	81.1	24,000*			
80	40	110	30.9	67.3	24,100*						
80	60	30	81.3	147.3	26,900*						
80	60	35	79.2	146.2	26,700*						
80	60	40	77.2	145.0	26,600*	81.2	143.9	26,000*			
80	60	50	72.9	141.9	26,200*	77.0	140.8	25,000*	80.9	138.6	22,400*
80	60	60	68.6	138.0	25,400*	72.6	136.9	24,100*	76.4	134.6	21,200*
80	60	70	64.1	133.2	24,400*	68.1	132.0	22,600*	71.8	129.6	19,100*
80	60	80	59.5	127.4	23,600*	63.4	126.1	21,900*	67.0	123.6	17,300*
80	60	90	54.6	120.3	22,500*	58.4	119.0	19,800*	61.9	116.3	15,900*
80	60	100	49.3	111.9	21,800*	53.1	110.4	18,000*	56.5	107.5	14,800*
80	60	110	43.5	101.6	19,700*	47.2	100.0	16,600*	50.4	96.8	13,900*
80	60	120	37.0	88.9	18,000*	40.6	87.0	15,500*			
80	60	130	29.2	72.2	16,600*						
80	80	35	81.2	166.7	17,800*						
80	80	40	79.4	165.6	17,600*						
80	80	50	75.7	162.9	17,000*	80.5	161.6	16,200*			
80	80	60	72.0	159.6	16,500*	76.8	158.2	15,400*	81.4	155.6	14,400*
80	80	70	68.2	155.4	15,700*	72.9	154.1	14,600*	77.4	151.4	13,900*
80	80	80	64.2	150.5	14,900*	68.9	149.1	14,100*	73.4	146.3	13,200*
80	80	90	60.2	144.7	14,200*	64.8	143.2	13,600*	69.2	140.3	12,000*
80	80	100	55.9	137.8	13,800*	60.5	136.3	13,100*	64.7	133.2	11,100*
80	80	110	51.3	129.8	13,200*	55.9	128.1	12,600*	60.0	124.8	10,300*
80	80	120	46.5	120.3	12,700*	50.9	118.5	11,800*	54.9	114.9	9,600*
80	80	130	41.1	108.9	12,100*	45.5	106.9	11,000*	49.3	102.9	9,100*
80	80	140	35.0	94.9	11,600*	39.3	92.6	10,300*			
80	80	150	27.7	76.8	11,100*						
80	100	40	81.1	186.0	9,800*						
80	100	50	77.9	183.7	9,300*						
80	100	60	74.6	180.7	8,800*	80.0	179.3	8,200*			
80	100	70	71.3	177.1	8,400*	76.6	175.7	7,900*	81.7	172.7	7,400*
80	100	80	67.8	172.8	8,000*	73.1	171.3	7,600*	78.2	168.3	7,200*
80	100	90	64.3	167.8	7,700*	69.6	166.3	7,300*	74.6	163.1	6,900*
80	100	100	60.7	162.0	7,400*	65.9	160.4	7,000*	70.8	157.1	6,700*
80	100	110	56.9	155.3	7,100*	62.1	153.6	6,800*	66.9	150.2	6,400*
80	100	120	52.9	147.5	6,800*	58.0	145.7	6,500*	62.8	142.1	6,100*
80	100	130	48.7	138.5	6,500*	53.8	136.6	6,200*	58.4	132.7	5,700*
80	100	140	44.1	128.0	6,200*	49.1	126.0	5,800*	53.6	121.7	5,100*

Boom Length (feet)	Jib Length (feet)	Jib Load Radius (feet)	Jib Angle to Boom								
			5 Degrees			15 Degrees			25 Degrees		
			Boom Angle (degree)	Jib Pt. Height (feet)	ABC+ A Cwt. (lbs.)	Boom Angle (degree)	Jib Pt. Height (feet)	ABC+ A Cwt. (lbs.)	Boom Angle (degree)	Jib Pt. Height (feet)	ABC+ A Cwt. (lbs.)
80	100	150	39.1	115.6	5,800*	44.0	113.3	5,200*	48.3	108.6	4,400*
80	100	160	33.4	100.6	5,100*	38.2	97.8	4,400*			
80	100	170	26.6	81.1	4,200*						
100	40	30	80.6	147.3	36,000*						
100	40	35	78.5	146.3	36,000*	81.2	145.4	35,900*			
100	40	40	76.5	145.0	36,000*	79.1	144.1	35,600*	81.7	142.3	34,600*
100	40	50	72.2	142.0	36,000*	74.9	141.0	35,000*	77.4	139.2	32,600*
100	40	60	67.9	138.1	35,400*	70.6	137.1	34,600*	73.0	135.2	29,400*
100	40	70	63.4	133.2	34,800*	66.1	132.2	34,300*	68.4	130.3	26,900*
100	40	80	58.8	127.4	34,500*	61.3	126.4	31,500*	63.6	124.3	24,900*
100	40	90	53.9	120.4	33,800*	56.4	119.3	28,700*	58.6	117.1	23,200*
100	40	100	48.6	111.9	30,400*	51.1	110.7	26,500*	53.1	108.3	22,500*
100	40	110	42.8	101.7	27,700*	45.2	100.3	24,700*	47.1	97.7	22,500*
100	40	120	36.3	88.9	25,000	38.6	87.4	23,200*			
100	40	130	28.5	72.3	22,500						
100	60	35	80.6	166.7	26,800*						
100	60	40	78.8	165.6	26,700*						
100	60	50	75.1	162.9	26,400*	78.7	161.7	25,400*			
100	60	60	71.4	159.6	26,000*	74.9	158.3	24,600*	78.3	155.9	22,200*
100	60	70	67.6	155.5	25,200*	71.1	154.2	23,800*	74.3	151.7	20,100*
100	60	80	63.6	150.5	24,300*	67.1	149.2	22,400*	70.3	146.6	18,400*
100	60	90	59.5	144.7	23,600*	63.0	143.3	21,700*	66.1	140.6	17,000*
100	60	100	55.3	137.8	22,800*	58.6	136.4	19,800*	61.7	133.5	15,800*
100	60	110	50.7	129.8	21,100*	54.1	128.2	18,300*	57.0	125.2	14,900*
100	60	120	45.9	120.3	19,700*	49.1	118.6	17,000*	51.9	115.3	14,000*
100	60	130	40.5	108.9	18,400*	43.7	107.0	15,900*	46.3	103.3	13,400*
100	60	140	34.4	94.9	17,300*	37.5	92.8	15,000*			
100	60	150	27.1	76.9	16,300*						
100	80	40	80.6	186.0	17,700*						
100	80	50	77.3	183.7	17,300*	81.6	182.3	16,400*			
100	80	60	74.1	180.7	16,800*	78.3	179.3	15,700*			
100	80	70	70.7	177.1	16,200*	74.9	175.7	15,000*	78.9	172.7	14,100*
100	80	80	67.3	172.8	15,500*	71.5	171.3	14,400*	75.4	168.3	13,700*
100	80	90	63.8	167.8	14,800*	67.9	166.3	14,000*	71.8	163.2	12,700*
100	80	100	60.1	162.0	14,200*	64.2	160.4	13,600*	68.1	157.2	11,700*
100	80	110	56.3	155.3	13,800*	60.4	153.6	13,100*	64.1	150.2	10,900*
100	80	120	52.4	147.5	13,400*	56.4	145.7	12,700*	60.0	142.1	10,300*
100	80	130	48.1	138.5	12,900*	52.1	136.6	11,900*	55.6	132.8	9,700*
100	80	140	43.6	128.0	12,400*	47.5	126.0	11,200*	50.8	121.8	9,200*
100	80	150	38.6	115.6	11,900*	42.4	113.3	10,600*	45.5	108.6	8,800*
100	80	160	32.9	100.6	11,300*	36.5	97.8	10,000*			
100	80	170	26.0	81.1	10,700*						
100	100	50	79.1	204.3	9,500*						
100	100	60	76.2	201.6	9,100*	81.0	200.0	8,300*			
100	100	70	73.2	198.4	8,600*	78.0	196.8	8,000*			

LS-248H II Tubular Jib Capacities

Boom Length (feet)	Jib Length (feet)	Jib Load Radius (feet)	Jib Angle to Boom								
			5 Degrees			15 Degrees			25 Degrees		
			Boom Angle (deg)	Jib Pt. Height (feet)	ABC+ A Cwt. (lbs.)	Boom Angle (deg)	Jib Pt. Height (feet)	ABC+ A Cwt. (lbs.)	Boom Angle (deg)	Jib Pt. Height (feet)	ABC+ A Cwt. (lbs.)
100	100	80	70.2	194.6	8,300*	74.9	193.0	7,700*	79.5	189.7	7,300*
100	100	90	67.1	190.2	8,000*	71.8	188.5	7,400*	76.3	185.1	7,100*
100	100	100	63.9	185.1	7,600*	68.6	183.4	7,200*	73.0	179.9	6,800*
100	100	110	60.6	179.3	7,400*	65.3	177.5	7,000*	69.7	173.9	6,600*
100	100	120	57.2	172.7	7,100*	61.8	170.8	6,800*	66.1	167.0	6,400*
100	100	130	53.7	165.1	6,900*	58.3	163.2	6,500*	62.5	159.2	6,100*
100	100	140	49.9	156.5	6,600*	54.5	154.4	6,300*	58.6	150.2	5,800*
100	100	150	46.0	146.7	6,400*	50.4	144.5	6,000*	54.4	139.9	5,200*
100	100	160	41.7	135.3	6,100*	46.1	132.9	5,400*	49.9	127.9	4,600*
100	100	170	36.9	122.0	5,500*	41.2	119.2	4,800*			
100	100	180	31.6	105.8	4,800*	35.7	102.6	4,000*			
100	100	190	25.1	85.2	4,000*						
120	40	30	81.8	167.6	36,000*						
120	40	35	80.0	166.7	36,000*						
120	40	40	78.2	165.6	36,000*	80.5	164.7	35,800*			
120	40	50	74.5	163.0	36,000*	76.9	162.0	35,300*	79.1	160.1	33,900*
120	40	60	70.8	159.6	35,800*	73.1	158.6	34,800*	75.3	156.7	30,800*
120	40	70	67.0	155.5	35,300*	69.3	154.5	34,500*	71.4	152.5	28,400*
120	40	80	63.0	150.6	34,800*	65.3	149.5	34,200*	67.3	147.5	26,300*
120	40	90	58.9	144.7	34,500*	61.2	143.6	31,300*	63.2	141.5	24,600*
120	40	100	54.7	137.9	31,300	56.9	136.7	28,900*	58.8	134.4	23,200*
120	40	110	50.1	129.8	27,600	52.3	128.6	26,900*	54.1	126.2	22,400*
120	40	120	45.2	120.3	24,400	47.4	119.0	24,700	49.1	116.3	22,500*
120	40	130	39.9	108.9	22,000	41.9	107.5	22,200			
120	40	140	33.8	95.0	19,800	35.8	93.3	20,000			
120	40	150	26.5	76.9	17,900						
120	60	35	81.6	187.0	26,900*						
120	60	40	80.0	186.1	26,800*						
120	60	50	76.8	183.7	26,500*	80.0	182.4	25,700*			
120	60	60	73.5	180.8	26,300*	76.7	179.5	25,000*	79.6	176.9	22,300*
120	60	70	70.2	177.1	25,700*	73.3	175.8	24,200*	76.2	173.2	21,000*
120	60	80	66.8	172.9	25,000*	69.8	171.5	23,400*	72.7	168.8	19,300*
120	60	90	63.2	167.8	24,200*	66.3	166.5	22,300*	69.1	163.7	17,900*
120	60	100	59.6	162.0	23,000*	62.6	160.6	21,400*	65.4	157.7	16,700*
120	60	110	55.8	155.3	21,300*	58.8	153.8	19,800*	61.5	150.8	15,700*
120	60	120	51.8	147.5	19,700*	54.8	145.9	18,500*	57.4	142.7	14,900*
120	60	130	47.6	138.5	18,400*	50.5	136.8	17,300*	53.0	133.4	14,100*
120	60	140	43.0	128.1	17,200*	45.9	126.2	16,300*	48.2	122.5	13,500*
120	60	150	38.0	115.7	16,100*	40.8	113.6	15,500*			
120	60	160	32.3	100.6	15,200*						
120	60	170	25.5	81.2	14,400*						
120	80	40	81.5	206.4	17,900*						
120	80	50	78.6	204.3	17,400*						
120	80	60	75.7	201.7	17,000*	79.5	200.1	16,000*			
120	80	70	72.7	198.4	16,600*	76.5	196.9	15,400*	80.1	193.8	14,200*
120	80	80	69.7	194.7	16,000*	73.5	193.1	14,700*	77.0	189.9	13,900*

Boom Length (feet)	Jib Length (feet)	Jib Load Radius (feet)	Jib Angle to Boom								
			5 Degrees			15 Degrees			25 Degrees		
			Boom Angle (degree)	Jib Pt. Height (feet)	ABC+ A Cwt. (lbs.)	Boom Angle (degree)	Jib Pt. Height (feet)	ABC+ A Cwt. (lbs.)	Boom Angle (degree)	Jib Pt. Height (feet)	ABC+ A Cwt. (lbs.)
120	80	90	66.6	190.2	15,400*	70.3	188.6	14,300*	73.8	185.3	13,200*
120	80	100	63.4	185.1	14,700*	67.1	183.5	13,900*	70.6	180.1	12,300*
120	80	110	60.1	179.3	14,200*	63.8	177.6	13,500*	67.2	174.1	11,500*
120	80	120	56.7	172.7	13,900*	60.4	170.9	13,100*	63.7	167.3	10,800*
120	80	130	53.2	165.1	13,400*	56.8	163.3	12,700*	60.0	159.5	10,200*
120	80	140	49.4	156.6	12,800*	53.0	154.5	12,100*	56.1	150.5	9,700*
120	80	150	45.5	146.7	12,000*	49.0	144.6	11,400*	52.0	140.2	9,000*
120	80	160	41.2	135.4	11,200*	44.6	133.0	10,800*	47.4	128.3	8,300*
120	80	170	36.4	122.0	10,500*	39.8	119.4	10,300*			
120	80	180	31.1	105.9	9,900*						
120	100	50	80.1	224.8	9,700*						
120	100	60	77.5	222.4	9,300*	81.8	220.7	8,400*			
120	100	70	74.8	219.5	8,900*	79.1	217.7	8,200*			
120	100	80	72.0	216.1	8,500*	76.4	214.3	7,900*	80.5	210.7	7,400*
120	100	90	69.3	212.1	8,200*	73.6	210.3	7,600*	77.7	206.7	7,200*
120	100	100	66.4	207.6	7,900*	70.7	205.7	7,400*	74.8	202.0	7,000*
120	100	110	63.5	202.4	7,600*	67.8	200.5	7,200*	71.8	196.7	6,800*
120	100	120	60.6	196.6	7,400*	64.8	194.7	7,000*	68.7	190.7	6,500*
120	100	130	57.5	190.1	7,100*	61.7	188.0	6,700*	65.5	183.9	6,300*
120	100	140	54.3	182.7	6,900*	58.4	180.6	6,500*	62.2	176.3	6,100*
120	100	150	50.9	174.4	6,700*	55.0	172.2	6,300*	58.7	167.7	5,700*
120	100	160	47.4	165.1	6,500*	51.5	162.7	6,000*	55.0	157.9	5,200*
120	100	170	43.6	154.4	6,200*	47.6	151.9	5,600*	51.1	146.7	4,700*
120	100	180	39.6	142.2	5,900*	43.5	139.5	5,100*	46.8	133.8	4,200*
120	100	190	35.1	128.0	5,300*	38.9	124.9	4,500*			
120	100	200	30.0	110.9	4,600*						
140	40	35	81.1	187.1	36,000*						
140	40	40	79.5	186.1	36,000*	81.6	185.1	35,900*			
140	40	50	76.2	183.7	36,000*	78.3	182.8	35,500*	80.3	180.8	34,600*
140	40	60	73.0	180.8	36,000*	75.0	179.8	35,000*	77.0	177.8	32,000*
140	40	70	69.6	177.2	35,600*	71.7	176.2	34,600*	73.6	174.1	29,600*
140	40	80	66.2	172.9	35,200*	68.2	171.9	34,400*	70.1	169.8	27,600*
140	40	90	62.7	167.9	34,700*	64.7	166.8	33,600*	66.5	164.7	25,900*
140	40	100	59.1	162.1	30,800	61.0	160.9	31,100*	62.8	158.7	24,400*
140	40	110	55.3	155.3	27,000	57.2	154.2	27,300	58.9	151.8	23,100*
140	40	120	51.3	147.6	23,900	53.2	146.3	24,100	54.8	143.9	22,400*
140	40	130	47.1	138.6	21,500	48.9	137.3	21,700	50.5	134.6	21,900
140	40	140	42.5	128.1	19,300	44.3	126.7	19,500	45.8	123.8	19,600
140	40	150	37.5	115.7	17,400	39.3	114.1	17,500			
140	40	160	31.8	100.7	15,800						
140	60	40	81.0	206.4	26,900*						
140	60	50	78.1	204.3	26,600*	81.0	203.0	25,900*			
140	60	60	75.2	201.7	26,400*	78.0	200.3	25,300*	80.7	197.7	22,300*
140	60	70	72.2	198.5	26,200*	75.0	197.1	24,600*	77.7	194.4	21,700*
140	60	80	69.2	194.7	25,500*	72.0	193.3	23,900*	74.6	190.5	20,100*
140	60	90	66.1	190.3	24,900*	68.9	188.8	22,700*	71.4	186.0	18,700*

LS-248H II Tubular Jib Capacities

Boom Length (feet)	Jib Length (feet)	Jib Load Radius (feet)	Jib Angle to Boom								
			5 Degrees			15 Degrees			25 Degrees		
			Boom Angle (deg)	Jib Pt. Height (feet)	ABC+ A Cwt. (lbs.)	Boom Angle (deg)	Jib Pt. Height (feet)	ABC+ A Cwt. (lbs.)	Boom Angle (deg)	Jib Pt. Height (feet)	ABC+ A Cwt. (lbs.)
140	60	100	62.9	185.2	24,000*	65.7	183.7	22,200*	68.2	180.8	17,600*
140	60	110	59.6	179.3	22,100*	62.4	177.8	20,700*	64.8	174.8	16,500*
140	60	120	56.2	172.7	19,800*	58.9	171.1	19,300*	61.3	168.0	15,700*
140	60	130	52.7	165.2	18,400*	55.3	163.5	18,000*	57.7	160.2	14,900*
140	60	140	49.0	156.6	17,100*	51.6	154.8	16,900*	53.8	151.3	14,200*
140	60	150	45.0	146.8	16,000*	47.5	144.9	15,800*	49.7	141.1	13,700*
140	60	160	40.7	135.4	15,000*	43.2	133.4	14,900*	45.2	129.2	12,600*
140	60	170	36.0	122.0	14,200*	38.4	119.8	14,100*			
140	60	180	30.6	105.9	13,400*						
140	80	50	79.7	224.8	17,600*						
140	80	60	77.0	222.4	17,200*	80.5	220.8	16,100*			
140	80	70	74.3	219.5	16,800*	77.8	217.9	15,600*	81.1	214.6	14,300*
140	80	80	71.6	216.1	16,400*	75.0	214.4	15,100*	78.3	211.1	14,000*
140	80	90	68.8	212.1	15,800*	72.2	210.4	14,500*	75.4	207.1	13,700*
140	80	100	66.0	207.6	15,200*	69.4	205.9	14,200*	72.5	202.4	12,800*
140	80	110	63.1	202.5	14,700*	66.5	200.7	13,800*	69.6	197.1	12,000*
140	80	120	60.1	196.6	14,200*	63.4	194.8	13,500*	66.5	191.1	11,300*
140	80	130	57.0	190.1	13,800*	60.3	188.2	13,100*	63.3	184.4	10,300*
140	80	140	53.8	182.7	12,800*	57.1	180.7	12,600*	60.0	176.8	9,300*
140	80	150	50.5	174.4	11,900*	53.7	172.4	11,700*	56.5	168.2	8,400*
140	80	160	46.9	165.1	11,100*	50.1	162.9	11,000*	52.9	158.4	7,600*
140	80	170	43.2	154.5	10,400*	46.3	152.1	10,200*	48.9	147.3	6,900*
140	80	180	39.1	142.3	9,800*	42.2	139.7	9,500*			
140	80	190	34.6	128.0	9,200*	37.6	125.1	8,900*			
140	80	200	29.5	110.9	8,800*						
140	100	50	80.9	245.2	9,800*						
140	100	60	78.5	243.0	9,400*						
140	100	70	76.1	240.4	9,100*	80.1	238.5	8,300*			
140	100	80	73.6	237.3	8,700*	77.6	235.4	8,000*	81.4	231.6	7,400*
140	100	90	71.1	233.7	8,400*	75.0	231.8	7,800*	78.8	227.9	7,200*
140	100	100	68.5	229.6	8,100*	72.5	227.6	7,500*	76.2	223.7	7,100*
140	100	110	65.9	224.9	7,800*	69.8	223.0	7,300*	73.5	219.0	6,900*
140	100	120	63.3	219.7	7,600*	67.1	217.7	7,100*	70.8	213.6	6,700*
140	100	130	60.5	213.9	7,300*	64.4	211.8	6,900*	67.9	207.6	6,500*
140	100	140	57.7	207.4	7,200*	61.5	205.3	6,700*	65.0	200.9	6,100*
140	100	150	54.8	200.2	7,000*	58.6	198.0	6,500*	62.0	193.5	5,500*
140	100	160	51.7	192.2	6,800*	55.5	189.8	6,300*	58.8	185.1	5,000*
140	100	170	48.6	183.2	6,500*	52.3	180.7	6,100*	55.5	175.8	4,500*
140	100	180	45.2	173.1	6,300*	48.9	170.5	5,800*	52.0	165.2	4,000*
140	100	190	41.6	161.8	6,100*	45.2	159.0	5,300*	48.2	153.3	3,700*
140	100	200	37.7	148.8	5,600*	41.3	145.7	4,800*			
140	100	210	33.5	133.7	5,100*	36.9	130.3	4,200*			
140	100	220	28.6	115.7	4,400*						
160	40	35	82.0	207.3	36,000*						
160	40	40	80.5	206.5	36,000*						
160	40	50	77.6	204.4	36,000*	79.5	203.4	35,600*	81.3	201.4	34,600*

Boom Length (feet)	Jib Length (feet)	Jib Load Radius (feet)	Jib Angle to Boom								
			5 Degrees			15 Degrees			25 Degrees		
			Boom Angle (degree)	Jib Pt. Height (feet)	ABC+ A Cwt. (lbs.)	Boom Angle (degree)	Jib Pt. Height (feet)	ABC+ A Cwt. (lbs.)	Boom Angle (degree)	Jib Pt. Height (feet)	ABC+ A Cwt. (lbs.)
160	40	60	74.7	201.7	36,000*	76.6	200.7	35,200*	78.3	198.7	33,000*
160	40	70	71.7	198.5	35,900*	73.6	197.5	34,900*	75.3	195.4	30,700*
160	40	80	68.7	194.7	35,500*	70.5	193.7	34,600*	72.2	191.6	28,700*
160	40	90	65.6	190.3	35,000	67.4	189.2	34,400*	69.1	187.1	27,000*
160	40	100	62.4	185.2	30,200	64.2	184.1	30,600	65.8	181.9	25,500*
160	40	110	59.1	179.4	26,400	60.9	178.2	26,700	62.5	176.0	24,200*
160	40	120	55.7	172.8	23,300	57.5	171.6	23,600	59.0	169.2	23,100*
160	40	130	52.2	165.2	20,900	53.9	164.0	21,200	55.4	161.5	21,400
160	40	140	48.5	156.6	18,700	50.2	155.3	19,000	51.6	152.7	19,200
160	40	150	44.5	146.8	16,800	46.2	145.4	17,000	47.5	142.5	17,200
160	40	160	40.2	135.5	15,200	41.8	133.9	15,400			
160	40	170	35.5	122.1	13,800	37.0	120.4	13,900			
160	40	180	30.1	106.0	12,500						
160	60	40	81.8	226.7	26,900*						
160	60	50	79.2	224.8	26,700*	81.8	223.5	26,100*			
160	60	60	76.6	222.4	26,500*	79.2	221.1	25,500*	81.6	218.3	22,000*
160	60	70	73.9	219.5	26,300*	76.5	218.1	24,900*	78.9	215.4	22,200*
160	60	80	71.2	216.1	26,000*	73.7	214.7	24,300*	76.1	211.9	20,800*
160	60	90	68.4	212.2	25,400*	70.9	210.7	23,800*	73.3	207.8	19,400*
160	60	100	65.6	207.6	23,800*	68.1	206.2	22,200*	70.4	203.2	18,300*
160	60	110	62.7	202.5	21,200*	65.1	201.0	20,600*	67.4	197.9	17,300*
160	60	120	59.7	196.7	19,700*	62.1	195.1	19,100*	64.3	192.0	16,400*
160	60	130	56.6	190.1	18,300*	59.0	188.5	17,900*	61.2	185.3	15,600*
160	60	140	53.4	182.8	17,000*	55.8	181.1	16,700*	57.9	177.7	14,100*
160	60	150	50.0	174.5	15,900*	52.4	172.7	15,700*	54.4	169.1	12,700*
160	60	160	46.5	165.1	14,900*	48.8	163.2	14,700*	50.8	159.5	11,400*
160	60	170	42.7	154.5	14,000*	45.0	152.5	13,900*	46.9	148.4	10,400*
160	60	180	38.7	142.3	12,800	40.9	140.1	13,000			
160	60	190	34.2	128.1	11,700	36.3	125.6	11,900			
160	60	200	29.1	111.0	10,700						
160	80	50	80.5	245.2	17,700*						
160	80	60	78.1	243.0	17,400*	81.3	241.3	16,300*			
160	80	70	75.7	240.4	17,000*	78.8	238.7	15,800*	81.9	235.3	14,400*
160	80	80	73.2	237.3	16,600*	76.3	235.6	15,300*	79.3	232.1	14,100*
160	80	90	70.7	233.7	16,200*	73.8	231.9	14,800*	76.8	228.5	13,900*
160	80	100	68.1	229.6	15,700*	71.2	227.8	14,400*	74.1	224.3	13,200*
160	80	110	65.5	225.0	15,200*	68.6	223.2	14,100*	71.5	219.5	12,300*
160	80	120	62.8	219.8	14,600*	65.9	217.9	13,800*	68.7	214.2	10,900*
160	80	130	60.1	214.0	13,700*	63.2	212.0	13,400*	65.9	208.2	9,700*
160	80	140	57.3	207.5	12,800*	60.3	205.5	12,500*	63.0	201.5	8,800*
160	80	150	54.4	200.3	11,900*	57.4	198.2	11,500*	60.0	194.1	7,900*
160	80	160	51.3	192.2	11,100*	54.3	190.1	10,500*	56.9	185.8	7,100*
160	80	170	48.2	183.2	10,300*	51.1	181.0	9,500*	53.6	176.5	6,500*
160	80	180	44.8	173.2	9,700*	47.7	170.8	8,900*	50.1	166.0	5,900*
160	80	190	41.2	161.8	9,100*	44.0	159.2	8,100*	46.3	154.1	5,400*
160	80	200	37.3	148.8	8,600*	40.1	146.0	7,600*			
160	80	210	33.1	133.8	8,100*	35.7	130.6	6,900*			

LS-248H II Tubular Jib Capacities

Boom Length (feet)	Jib Length (feet)	Jib Load Radius (feet)	Jib Angle to Boom								
			5 Degrees			15 Degrees			25 Degrees		
			Boom Angle (deg)	Jib Pt. Height (feet)	ABC+ A Cwt. (lbs.)	Boom Angle (deg)	Jib Pt. Height (feet)	ABC+ A Cwt. (lbs.)	Boom Angle (deg)	Jib Pt. Height (feet)	ABC+ A Cwt. (lbs.)
160	80	220	28.2	115.7	7,700*						
160	100	50	81.6	265.5	9,900*						
160	100	60	79.4	263.5	9,600*						
160	100	70	77.2	261.1	9,200*	80.9	259.1	8,300*			
160	100	80	74.9	258.2	8,900*	78.6	256.3	8,100*			
160	100	90	72.6	255.0	8,500*	76.2	253.0	7,900*	79.7	249.0	7,300*
160	100	100	70.3	251.2	8,300*	73.9	249.2	7,600*	77.3	245.2	7,100*
160	100	110	67.9	247.0	8,000*	71.5	245.0	7,400*	74.9	240.8	7,000*
160	100	120	65.5	242.3	7,800*	69.1	240.2	7,200*	72.4	236.0	6,800*
160	100	130	63.0	237.1	7,600*	66.6	234.9	7,100*	69.9	230.6	6,400*
160	100	140	60.5	231.2	7,300*	64.0	229.0	6,900*	67.3	224.6	5,800*
160	100	150	57.9	224.8	7,200*	61.4	222.5	6,700*	64.6	218.0	5,200*
160	100	160	55.2	217.7	7,000*	58.7	215.4	6,500*	61.8	210.7	4,700*
160	100	170	52.4	209.9	6,800*	55.9	207.4	6,300*	59.0	202.5	4,200*
160	100	180	49.5	201.2	6,600*	52.9	198.7	5,700*	55.9	193.5	3,800*
160	100	190	46.5	191.6	6,400*	49.9	188.9	5,200*	52.8	183.5	3,500*
160	100	200	43.3	180.9	6,200*	46.6	178.0	4,900*	49.4	172.2	3,200*
160	100	210	39.9	168.8	5,900*	43.1	165.7	4,500*	45.8	159.5	2,900*
160	100	220	36.2	155.1	5,400*	39.3	151.7	4,200*			
160	100	230	32.1	139.2	4,900*	35.1	135.4	3,900*			
160	100	240	27.4	120.2	4,300*						
180	40	40	81.4	226.8	36,000*						
180	40	50	78.8	224.9	36,000*	80.5	223.8	35,800*			
180	40	60	76.1	222.5	36,000*	77.8	221.4	35,400*	79.4	219.4	33,900*
180	40	70	73.4	219.6	36,000*	75.1	218.5	35,100*	76.7	216.5	31,600*
180	40	80	70.7	216.2	35,800*	72.4	215.1	34,700*	73.9	213.0	29,700*
180	40	90	67.9	212.2	34,400	69.6	211.1	34,500*	71.1	209.0	28,000*
180	40	100	65.1	207.7	29,600	66.8	206.6	30,100	68.3	204.4	26,500*
180	40	110	62.2	202.5	25,800	63.8	201.4	26,200	65.3	199.1	25,200*
180	40	120	59.2	196.7	22,700	60.8	195.5	23,000	62.3	193.2	23,300
180	40	130	56.1	190.2	20,400	57.7	189.0	20,700	59.1	186.5	20,900
180	40	140	52.9	182.8	18,200	54.5	181.5	18,400	55.9	179.0	18,700
180	40	150	49.6	174.5	16,300	51.2	173.2	16,500	52.4	170.6	16,700
180	40	160	46.1	165.2	14,600	47.6	163.8	14,800	48.8	161.0	15,000
180	40	170	42.3	154.6	13,200	43.8	153.1	13,300			
180	40	180	38.2	142.4	11,900	39.7	140.7	12,000			
180	40	190	33.8	128.2	10,800	35.1	126.3	10,900			
180	40	200	28.7	111.0	9,800						
180	60	50	80.1	245.2	26,800*						
180	60	60	77.7	243.0	26,600*	80.1	241.6	25,700*			
180	60	70	75.2	240.4	26,400*	77.6	239.0	25,200*	79.8	236.1	22,200*
180	60	80	72.8	237.3	26,200*	75.1	235.9	24,600*	77.3	233.0	21,400*
180	60	90	70.3	233.7	25,500*	72.6	232.3	24,100*	74.8	229.3	20,100*
180	60	100	67.7	229.6	23,500*	70.0	228.1	22,600*	72.2	225.2	18,900*
180	60	110	65.1	225.0	21,000*	67.4	223.5	20,300*	69.5	220.4	17,800*
180	60	120	62.4	219.8	19,500*	64.7	218.2	18,900*	66.8	215.1	15,900*

Boom Length (feet)	Jib Length (feet)	Jib Load Radius (feet)	Jib Angle to Boom								
			5 Degrees			15 Degrees			25 Degrees		
			Boom Angle (degree)	Jib Pt. Height (feet)	ABC+ A Cwt. (lbs.)	Boom Angle (degree)	Jib Pt. Height (feet)	ABC+ A Cwt. (lbs.)	Boom Angle (degree)	Jib Pt. Height (feet)	ABC+ A Cwt. (lbs.)
180	60	130	59.7	214.0	18,100*	62.0	212.4	17,600*	64.0	209.2	14,400*
180	60	140	56.9	207.5	16,900*	59.1	205.8	16,500*	61.1	202.5	12,800*
180	60	150	54.0	200.3	15,700*	56.2	198.6	15,400*	58.1	195.1	11,500*
180	60	160	50.9	192.3	14,700*	53.1	190.5	14,500*	55.0	186.9	10,300*
180	60	170	47.7	183.3	13,500	49.9	181.4	13,400*	51.7	177.6	9,500*
180	60	180	44.4	173.2	12,300	46.5	171.2	12,300*	48.2	167.2	8,600*
180	60	190	40.8	161.9	11,100	42.9	159.7	11,300			
180	60	200	36.9	148.9	10,100	38.9	146.5	10,300			
180	60	210	32.7	133.8	9,200						
180	60	220	27.8	115.8	8,400						
180	80	50	81.3	265.5	17,800*						
180	80	60	79.0	263.5	17,500*	82.0	261.8	16,400*			
180	80	70	76.8	261.1	17,200*	79.7	259.4	16,000*			
180	80	80	74.5	258.3	16,800*	77.4	256.5	15,500*	80.2	253.0	14,200*
180	80	90	72.2	255.0	16,500*	75.1	253.2	15,100*	77.8	249.6	14,000*
180	80	100	69.9	251.3	16,000*	72.8	249.4	14,600*	75.5	245.8	12,900*
180	80	110	67.5	247.0	15,600*	70.4	245.2	14,300*	73.0	241.5	11,500*
180	80	120	65.1	242.3	14,700*	67.9	240.4	14,000*	70.6	236.7	10,300*
180	80	130	62.6	237.1	13,600*	65.5	235.2	13,000*	68.0	231.3	9,100*
180	80	140	60.1	231.3	12,600*	62.9	229.3	11,600*	65.4	225.3	8,200*
180	80	150	57.5	224.8	11,800*	60.3	222.8	10,700*	62.8	218.7	7,400*
180	80	160	54.8	217.8	11,000*	57.6	215.6	9,600*	60.0	211.4	6,600*
180	80	170	52.0	209.9	10,200*	54.8	207.7	8,900*	57.1	203.3	6,000*
180	80	180	49.1	201.2	9,600*	51.8	198.9	8,100*	54.1	194.3	5,400*
180	80	190	46.1	191.6	9,000*	48.8	189.2	7,500*	51.0	184.4	5,000*
180	80	200	42.9	180.9	8,500*	45.5	178.3	6,800*	47.6	173.2	4,500*
180	80	210	39.5	168.8	8,000*	42.0	166.1	6,400*			
180	80	220	35.8	155.1	7,600*	38.3	152.1	5,800*			
180	80	230	31.7	139.3	7,200*						
180	80	240	27.0	120.3	6,800*						
180	100	60	80.2	283.9	9,700*						
180	100	70	78.1	281.7	9,400*	81.5	279.7	8,400*			
180	100	80	76.0	279.1	9,000*	79.4	277.0	8,200*			
180	100	90	73.9	276.1	8,700*	77.3	274.0	8,000*	80.5	269.9	7,300*
180	100	100	71.7	272.6	8,400*	75.1	270.5	7,800*	78.3	266.4	7,200*
180	100	110	69.5	268.7	8,200*	72.9	266.6	7,500*	76.1	262.4	7,000*
180	100	120	67.3	264.4	8,000*	70.7	262.3	7,400*	73.8	258.0	6,800*
180	100	130	65.1	259.7	7,800*	68.4	257.5	7,200*	71.5	253.1	6,100*
180	100	140	62.8	254.4	7,500*	66.1	252.1	7,000*	69.1	247.6	5,500*
180	100	150	60.4	248.6	7,300*	63.7	246.3	6,900*	66.7	241.7	4,900*
180	100	160	58.0	242.2	7,200*	61.3	239.8	6,400*	64.2	235.1	4,400*
180	100	170	55.6	235.2	7,000*	58.8	232.7	5,900*	61.7	227.9	4,000*
180	100	180	53.0	227.5	6,800*	56.2	225.0	5,400*	59.0	219.9	3,600*
180	100	190	50.3	219.1	6,700*	53.5	216.5	5,000*	56.3	211.2	3,200*
180	100	200	47.6	209.8	6,100*	50.7	207.1	4,500*	53.4	201.6	2,900*
180	100	210	44.7	199.6	5,700*	47.8	196.7	4,200*	50.4	190.9	2,600*
180	100	220	41.6	188.2	5,300*	44.6	185.2	3,900*	47.1	178.9	2,500*

LS-248H II Tubular Jib Capacities

Boom Length (feet)	Jib Length (feet)	Jib Load Radius (feet)	Jib Angle to Boom								
			5 Degrees			15 Degrees			25 Degrees		
			Boom Angle (deg)	Jib Pt. Height (feet)	ABC+ A Cwt. (lbs.)	Boom Angle (deg)	Jib Pt. Height (feet)	ABC+ A Cwt. (lbs.)	Boom Angle (deg)	Jib Pt. Height (feet)	ABC+ A Cwt. (lbs.)
180	100	230	38.3	175.5	5,000*	41.3	172.2	3,600*			
180	100	240	34.7	161.1	4,600*	37.6	157.5	3,400*			
180	100	250	30.8	144.5	4,400*						
180	100	260	26.3	124.6	4,100*						
200	40	50	79.7	245.3	36,000*	81.3	244.2	35,900*			
200	40	60	77.3	243.1	36,000*	78.9	242.1	35,500*	80.3	240.0	34,600*
200	40	70	74.8	240.5	36,000*	76.4	239.4	35,200*	77.9	237.3	32,500*
200	40	80	72.4	237.4	36,000*	73.9	236.3	34,900*	75.3	234.2	30,500*
200	40	90	69.9	233.8	33,800	71.4	232.7	33,500*	72.8	230.5	28,900*
200	40	100	67.3	229.7	29,000	68.8	228.6	29,500	70.2	226.4	27,400*
200	40	110	64.7	225.1	25,200	66.2	223.9	25,600	67.6	221.7	25,200*
200	40	120	62.0	219.9	22,000	63.5	218.7	22,400	64.9	216.4	22,800
200	40	130	59.3	214.0	19,800	60.8	212.9	20,100	62.1	210.5	20,100*
200	40	140	56.5	207.6	17,600	57.9	206.3	17,900	59.2	203.9	18,100
200	40	150	53.6	200.4	15,700	55.0	199.1	15,900	56.2	196.5	16,200
200	40	160	50.5	192.3	14,000	52.0	191.0	14,300	53.1	188.3	14,500
200	40	170	47.3	183.3	12,600	48.8	181.9	12,800	49.9	179.2	13,000
200	40	180	44.0	173.3	11,300	45.4	171.8	11,500	46.4	168.8	11,600
200	40	190	40.4	161.9	10,200	41.8	160.3	10,300			
200	40	200	36.5	149.0	9,200	37.8	147.2	9,300			
200	40	210	32.3	133.9	8,200*						
200	40	220	27.4	115.9	7,100*						
200	60	50	80.9	265.6	26,900*						
200	60	60	78.7	263.6	26,700*	80.9	262.1	25,900*			
200	60	70	76.4	261.1	26,500*	78.6	259.7	25,400*	80.7	256.8	22,200*
200	60	80	74.1	258.3	26,300*	76.3	256.8	24,900*	78.3	253.9	22,000*
200	60	90	71.8	255.0	25,000*	74.0	253.5	24,000*	76.0	250.6	20,500*
200	60	100	69.5	251.3	23,000*	71.6	249.8	21,400*	73.6	246.8	18,400*
200	60	110	67.1	247.1	20,600*	69.3	245.5	19,900*	71.2	242.5	16,500*
200	60	120	64.7	242.4	19,200*	66.8	240.8	18,600*	68.7	237.7	14,500*
200	60	130	62.2	237.1	17,800*	64.3	235.5	17,200*	66.2	232.3	13,000*
200	60	140	59.7	231.3	16,600*	61.8	229.7	15,800*	63.6	226.4	11,600*
200	60	150	57.1	224.9	15,500*	59.2	223.2	14,300*	61.0	219.8	10,300*
200	60	160	54.4	217.8	14,400	56.5	216.0	12,900*	58.2	212.5	9,500*
200	60	170	51.7	210.0	12,900	53.7	208.1	11,800*	55.4	204.5	8,500*
200	60	180	48.8	201.3	11,700	50.8	199.4	10,800*	52.4	195.6	7,700*
200	60	190	45.7	191.7	10,500	47.7	189.7	9,900*	49.3	185.6	7,100*
200	60	200	42.5	180.9	9,500	44.5	178.8	9,100*	46.0	174.5	6,400*
200	60	210	39.1	168.9	8,600	41.0	166.6	8,400*			
200	60	220	35.4	155.2	7,700*	37.2	152.7	7,700*			
200	60	230	31.3	139.3	6,800*						
200	60	240	26.6	120.4	5,900*						
200	80	50	81.9	285.8	17,900*						
200	80	60	79.8	284.0	17,600*						
200	80	70	77.7	281.7	17,300*	80.5	279.9	16,100*			
200	80	80	75.6	279.1	17,000*	78.4	277.3	15,700*	80.9	273.7	14,300*

Boom Length (feet)	Jib Length (feet)	Jib Load Radius (feet)	Jib Angle to Boom								
			5 Degrees			15 Degrees			25 Degrees		
			Boom Angle (degree)	Jib Pt. Height (feet)	ABC+ A Cwt. (lbs.)	Boom Angle (degree)	Jib Pt. Height (feet)	ABC+ A Cwt. (lbs.)	Boom Angle (degree)	Jib Pt. Height (feet)	ABC+ A Cwt. (lbs.)
200	80	90	73.5	276.1	16,700*	76.2	274.2	15,300*	78.8	270.6	13,800*
200	80	100	71.4	272.6	16,300*	74.1	270.8	14,900*	76.6	267.1	12,200*
200	80	110	69.2	268.8	15,700*	71.9	266.9	14,400*	74.3	263.1	10,800*
200	80	120	67.0	264.5	14,500*	69.6	262.6	13,300*	72.1	258.7	9,700*
200	80	130	64.7	259.7	13,400*	67.4	257.7	12,000*	69.8	253.8	8,500*
200	80	140	62.4	254.4	12,500*	65.1	252.4	10,800*	67.4	248.4	7,600*
200	80	150	60.1	248.6	11,600*	62.7	246.6	9,800*	65.0	242.5	6,700*
200	80	160	57.7	242.2	10,800*	60.3	240.1	8,900*	62.6	235.9	6,200*
200	80	170	55.2	235.2	10,100*	57.8	233.1	8,100*	60.0	228.7	5,500*
200	80	180	52.6	227.6	9,500*	55.2	225.3	7,300*	57.4	220.8	5,000*
200	80	190	50.0	219.1	8,900*	52.5	216.8	6,800*	54.6	212.1	4,600*
200	80	200	47.2	209.9	8,200*	49.7	207.4	6,100*	51.8	202.5	4,100*
200	80	210	44.3	199.6	7,700*	46.8	197.1	5,700*	48.7	191.9	3,800*
200	80	220	41.2	188.3	7,000*	43.6	185.5	5,300*	45.5	180.0	3,500*
200	80	230	38.0	175.6	6,600*	40.3	172.6	4,900*			
200	80	240	34.4	161.2	6,200*	36.7	157.9	4,500*			
200	80	250	30.5	144.5	5,600*						
200	80	260	25.9	124.7	4,800*						
200	100	60	80.8	304.3	9,800*						
200	100	70	78.9	302.2	9,500*						
200	100	80	76.9	299.8	9,200*	80.1	297.7	8,300*			
200	100	90	75.0	297.0	8,900*	78.2	294.9	8,100*	81.2	290.6	7,400*
200	100	100	73.0	293.8	8,600*	76.1	291.7	7,900*	79.1	287.4	7,300*
200	100	110	71.0	290.2	8,300*	74.1	288.0	7,700*	77.1	283.7	7,100*
200	100	120	68.9	286.2	8,100*	72.1	284.0	7,500*	75.0	279.6	6,500*
200	100	130	66.9	281.8	7,900*	70.0	279.6	7,300*	72.9	275.1	5,800*
200	100	140	64.8	277.0	7,700*	67.8	274.7	7,200*	70.7	270.2	5,200*
200	100	150	62.6	271.7	7,500*	65.7	269.4	6,800*	68.5	264.7	4,600*
200	100	160	60.4	265.9	7,300*	63.5	263.5	6,100*	66.2	258.7	4,100*
200	100	170	58.2	259.5	7,200*	61.2	257.1	5,600*	63.9	252.2	3,700*
200	100	180	55.9	252.6	6,800*	58.9	250.1	5,000*	61.6	245.1	3,300*
200	100	190	53.5	245.1	6,100*	56.5	242.5	4,600*	59.1	237.3	3,000*
200	100	200	51.0	236.9	5,700*	54.0	234.2	4,300*	56.6	228.8	2,700*
200	100	210	48.5	227.9	5,300*	51.4	225.1	3,800*	53.9	219.5	2,500*
200	100	220	45.8	218.1	5,000*	48.7	215.2	3,600*	51.2	209.3	2,200*
200	100	230	43.0	207.3	4,600*	45.9	204.2	3,300*	48.2	198.0	2,100*
200	100	240	40.1	195.3	4,300*	42.9	192.0	3,100*			
200	100	250	36.9	182.0	4,000*	39.7	178.4	2,900*			
200	100	260	33.5	166.9	3,700*	36.1	163.0	2,700*			
200	100	270	29.7	149.5	3,500*						
200	100	280	25.3	128.9	3,300*						
220	40	50	80.5	265.6	36,000*	82.0	264.6	35,900*			
220	40	60	78.3	263.6	36,000*	79.7	262.6	35,700*	81.1	260.5	34,600*
220	40	70	76.0	261.2	36,000*	77.5	260.1	35,400*	78.8	258.0	33,200*
220	40	80	73.8	258.4	36,000*	75.2	257.3	34,700*	76.5	255.1	31,300*
220	40	90	71.5	255.1	33,200	72.9	254.0	32,200*	74.2	251.8	27,800*
220	40	100	69.1	251.3	28,400	70.5	250.2	28,500*	71.8	248.0	24,700*

LS-248H II Tubular Jib Capacities

Boom Length (feet)	Jib Length (feet)	Jib Load Radius (feet)	Jib Angle to Boom								
			5 Degrees			15 Degrees			25 Degrees		
			Boom Angle (deg)	Jib Pt. Height (feet)	ABC+ A Cwt. (lbs.)	Boom Angle (deg)	Jib Pt. Height (feet)	ABC+ A Cwt. (lbs.)	Boom Angle (deg)	Jib Pt. Height (feet)	ABC+ A Cwt. (lbs.)
220	40	110	66.8	247.1	24,600	68.2	246.0	25,100	69.4	243.8	21,500*
220	40	120	64.3	242.4	21,800	65.7	241.3	21,700*	67.0	239.0	19,100*
220	40	130	61.9	237.2	19,200	63.3	236.0	19,600	64.5	233.7	17,400*
220	40	140	59.3	231.4	17,000	60.7	230.2	17,300	61.9	227.8	15,600*
220	40	150	56.7	224.9	15,100	58.1	223.7	15,400	59.3	221.2	14,100*
220	40	160	54.1	217.9	13,400	55.4	216.6	13,700	56.5	214.0	12,800*
220	40	170	51.3	210.0	12,000	52.6	208.7	12,200	53.7	206.0	11,600*
220	40	180	48.4	201.4	10,700	49.7	200.0	10,900	50.8	197.2	10,600*
220	40	190	45.4	191.7	9,600	46.7	190.3	9,800	47.7	187.3	9,600*
220	40	200	42.2	181.0	8,500*	43.4	179.5	8,700			
220	40	210	38.7	169.0	7,400*	40.0	167.3	7,600*			
220	40	220	35.0	155.3	6,400*	36.2	153.4	6,600*			
220	40	230	30.9	139.4	5,400*						
220	40	240	26.3	120.5	4,600*						
220	60	50	81.5	285.9	26,900*						
220	60	60	79.5	284.0	26,700*	81.5	282.6	26,000*			
220	60	70	77.4	281.8	26,600*	79.4	280.3	25,600*	81.3	277.4	21,500*
220	60	80	75.3	279.1	26,400*	77.3	277.7	25,100*	79.2	274.7	21,300*
220	60	90	73.2	276.1	24,300*	75.2	274.6	23,300*	77.1	271.6	18,900*
220	60	100	71.0	272.7	21,700*	73.0	271.2	20,800*	74.9	268.1	16,700*
220	60	110	68.8	268.8	20,100*	70.8	267.3	18,700*	72.7	264.2	14,900*
220	60	120	66.6	264.5	18,700*	68.6	262.9	16,800*	70.4	259.8	13,000*
220	60	130	64.4	259.7	17,400*	66.3	258.1	15,300*	68.1	254.9	11,700*
220	60	140	62.1	254.4	16,200*	64.0	252.8	13,800*	65.8	249.5	10,400*
220	60	150	59.7	248.6	14,900*	61.7	247.0	12,600*	63.4	243.6	9,500*
220	60	160	57.3	242.3	13,600*	59.2	240.5	11,200*	60.9	237.1	8,400*
220	60	170	54.9	235.3	12,300	56.7	233.5	10,200*	58.4	229.9	7,500*
220	60	180	52.3	227.6	11,100	54.2	225.8	9,400*	55.8	222.1	6,900*
220	60	190	49.6	219.2	9,900	51.5	217.3	8,600*	53.0	213.4	6,200*
220	60	200	46.9	209.9	8,900	48.7	207.9	7,800*	50.2	203.9	5,700*
220	60	210	44.0	199.7	7,900*	45.8	197.6	7,100*	47.2	193.3	5,200*
220	60	220	40.9	188.3	6,900*	42.7	186.1	6,600*			
220	60	230	37.6	175.6	6,000*	39.3	173.2	6,200*			
220	60	240	34.1	161.2	5,100*	35.7	158.6	5,400*			
220	60	250	30.1	144.6	4,300*						
220	60	260	25.6	124.8	3,600*						
220	80	60	80.5	304.4	17,700*						
220	80	70	78.6	302.3	17,400*	81.1	300.4	16,300*			
220	80	80	76.6	299.8	17,100*	79.2	298.0	15,900*	81.6	294.3	14,400*
220	80	90	74.6	297.0	16,800*	77.2	295.2	15,500*	79.6	291.4	12,900*
220	80	100	72.7	293.8	16,500*	75.2	291.9	15,100*	77.5	288.2	11,300*
220	80	110	70.6	290.3	15,300*	73.1	288.3	13,500*	75.5	284.5	10,000*
220	80	120	68.6	286.3	14,200*	71.1	284.3	12,200*	73.4	280.5	8,900*
220	80	130	66.5	281.9	13,200*	69.0	279.9	11,000*	71.3	276.0	8,000*
220	80	140	64.4	277.0	12,200*	66.9	275.0	9,800*	69.1	271.0	7,000*
220	80	150	62.3	271.7	11,100*	64.7	269.7	8,900*	66.9	265.6	6,200*
220	80	160	60.1	265.9	10,200*	62.5	263.8	8,000*	64.7	259.6	5,600*

Boom Length (feet)	Jib Length (feet)	Jib Load Radius (feet)	Jib Angle to Boom								
			5 Degrees			15 Degrees			25 Degrees		
			Boom Angle (degree)	Jib Pt. Height (feet)	ABC+ A Cwt. (lbs.)	Boom Angle (degree)	Jib Pt. Height (feet)	ABC+ A Cwt. (lbs.)	Boom Angle (degree)	Jib Pt. Height (feet)	ABC+ A Cwt. (lbs.)
220	80	170	57.8	259.6	9,300*	60.2	257.4	7,300*	62.4	253.2	5,100*
220	80	180	55.5	252.7	8,500*	57.9	250.5	6,600*	60.0	246.1	4,500*
220	80	190	53.2	245.1	7,800*	55.5	242.9	6,100*	57.6	238.3	4,100*
220	80	200	50.7	236.9	7,200*	53.0	234.6	5,600*	55.0	229.8	3,700*
220	80	210	48.2	228.0	6,600*	50.5	225.5	5,000*	52.4	220.6	3,400*
220	80	220	45.5	218.1	6,200*	47.8	215.6	4,600*	49.6	210.4	3,100*
220	80	230	42.7	207.3	5,700*	45.0	204.6	4,300*	46.7	199.2	2,900*
220	80	240	39.8	195.4	5,300*	42.0	192.5	4,000*			
220	80	250	36.6	182.0	4,700*	38.7	178.9	3,700*			
220	80	260	33.2	167.0	4,000*	35.2	163.5	3,500*			
220	80	270	29.4	149.6	3,400*						
220	80	280	25.0	129.0	2,700*						
220	100	60	81.4	324.7	9,900*						
220	100	70	79.6	322.7	9,600*						
220	100	80	77.8	320.4	9,300*	80.8	318.3	8,300*			
220	100	90	75.9	317.8	9,000*	78.9	315.6	8,100*	81.8	311.3	7,400*
220	100	100	74.1	314.8	8,800*	77.0	312.6	8,000*	79.9	308.3	7,300*
220	100	110	72.2	311.5	8,500*	75.2	309.3	7,800*	77.9	304.9	7,000*
220	100	120	70.3	307.8	8,300*	73.3	305.6	7,600*	76.0	301.1	6,100*
220	100	130	68.4	303.7	8,100*	71.3	301.4	7,400*	74.0	296.9	5,400*
220	100	140	66.4	299.2	7,900*	69.4	296.9	6,900*	72.0	292.3	4,900*
220	100	150	64.5	294.3	7,700*	67.4	292.0	6,300*	70.0	287.3	4,300*
220	100	160	62.4	289.0	7,300*	65.3	286.6	5,700*	67.9	281.8	3,800*
220	100	170	60.4	283.2	6,700*	63.2	280.7	5,100*	65.8	275.8	3,400*
220	100	180	58.3	276.9	6,200*	61.1	274.4	4,700*	63.7	269.4	3,000*
220	100	190	56.1	270.1	5,700*	58.9	267.5	4,300*	61.5	262.3	2,700*
220	100	200	53.9	262.7	5,200*	56.7	260.0	3,800*	59.2	254.7	2,500*
220	100	210	51.6	254.6	4,800*	54.4	251.9	3,600*	56.8	246.4	2,200*
220	100	220	49.3	245.9	4,400*	52.0	243.1	3,200*	54.4	237.4	2,000*
220	100	230	46.8	236.4	4,100*	49.5	233.4	3,000*			
220	100	240	44.3	226.0	3,800*	46.9	222.9	2,800*			
220	100	250	41.6	214.7	3,600*	44.2	211.4	2,500*			
220	100	260	38.7	202.2	3,300*	41.3	198.7	2,400*			
220	100	270	35.7	188.2	3,100*	38.2	184.4	2,200*			
220	100	280	32.3	172.5	2,900*						
220	100	290	28.7	154.4	2,500*						
240	40	50	81.2	285.9	36,000*						
240	40	60	79.1	284.1	36,000*	80.5	283.0	35,800*	81.7	280.9	34,600*
240	40	70	77.0	281.8	36,000*	78.4	280.8	34,300*	79.6	278.6	30,700*
240	40	80	74.9	279.2	32,500*	76.3	278.1	30,400*	77.5	276.0	27,400*
240	40	90	72.8	276.2	28,900*	74.2	275.1	27,100*	75.4	272.9	24,100*
240	40	100	70.7	272.7	26,000*	72.0	271.6	24,300*	73.2	269.4	20,600*
240	40	110	68.5	268.9	23,600*	69.8	267.7	21,100*	71.0	265.5	18,600*
240	40	120	66.3	264.6	20,600*	67.6	263.4	19,100*	68.8	261.1	16,500*
240	40	130	64.0	259.8	18,600	65.3	258.6	17,200*	66.5	256.3	15,000*
240	40	140	61.7	254.5	16,400	63.0	253.3	15,700*	64.1	251.0	13,500*
240	40	150	59.4	248.7	14,500	60.7	247.5	14,100*	61.8	245.1	12,200*

LS-248H II Tubular Jib Capacities

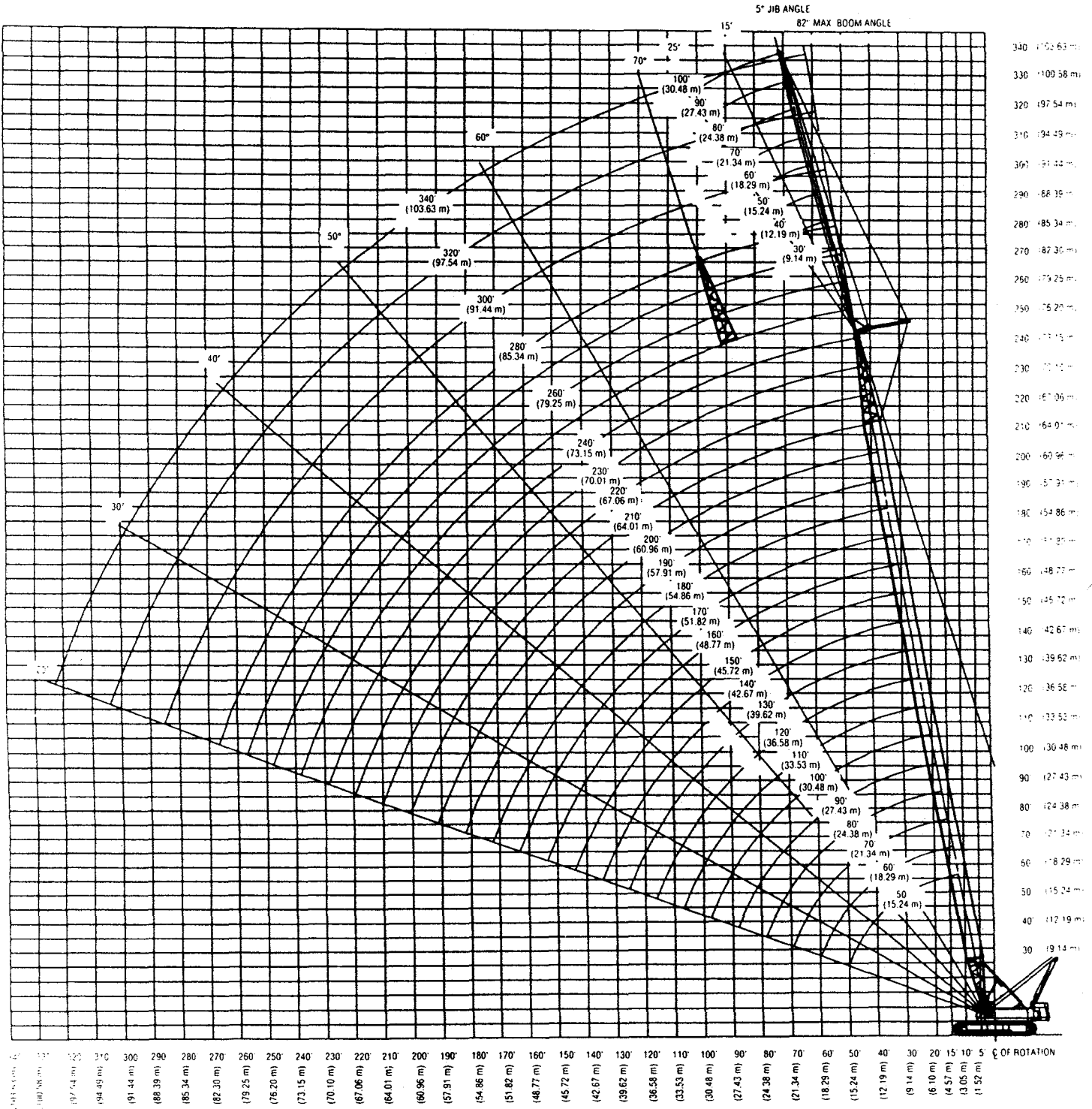
Boom Length (feet)	Jib Length (feet)	Jib Load Radius (feet)	Jib Angle to Boom								
			5 Degrees			15 Degrees			25 Degrees		
			Boom Angle (deg)	Jib Pt. Height (feet)	ABC+ A Cwt. (lbs.)	Boom Angle (deg)	Jib Pt. Height (feet)	ABC+ A Cwt. (lbs.)	Boom Angle (deg)	Jib Pt. Height (feet)	ABC+ A Cwt. (lbs.)
240	40	160	57.0	242.3	12,800	58.2	241.1	12,900*	59.3	238.6	11,000*
240	40	170	54.5	235.3	11,400	55.8	234.0	11,600	56.8	231.5	9,900*
240	40	180	51.9	227.7	10,100	53.2	226.3	10,300	54.2	223.7	9,000*
240	40	190	49.3	219.2	8,900*	50.5	217.9	9,200	51.5	215.1	8,300*
240	40	200	46.5	210.0	7,600*	47.7	208.5	7,900*	48.7	205.6	7,500*
240	40	210	43.6	199.8	6,500*	44.8	198.2	6,800*	45.7	195.2	6,900*
240	40	220	40.6	188.4	5,500*	41.7	186.8	5,700*			
240	40	230	37.3	175.7	4,600*	38.4	174.0	4,800*			
240	40	240	33.7	161.3	3,700*						
240	40	250	29.8	144.7	3,000*						
240	40	260	25.3	124.9	2,200*						
240	60	60	80.2	304.4	26,800*						
240	60	70	78.2	302.3	26,600*	80.1	300.8	25,700*	81.9	297.8	21,700*
240	60	80	76.3	299.9	25,300*	78.2	298.4	23,500*	80.0	295.4	19,100*
240	60	90	74.3	297.1	23,300*	76.2	295.5	20,600*	78.0	292.5	17,000*
240	60	100	72.3	293.9	20,800*	74.2	292.3	18,400*	75.9	289.3	15,000*
240	60	110	70.3	290.3	18,800*	72.2	288.7	16,500*	73.9	285.6	13,400*
240	60	120	68.3	286.3	17,000*	70.1	284.7	14,900*	71.8	281.6	11,800*
240	60	130	66.2	281.9	15,300*	68.0	280.3	13,300*	69.7	277.1	10,500*
240	60	140	64.1	277.1	14,100*	65.9	275.4	12,000*	67.6	272.2	9,300*
240	60	150	61.9	271.8	12,700*	63.8	270.1	10,900*	65.4	266.8	8,400*
240	60	160	59.8	266.0	11,500*	61.6	264.3	9,900*	63.1	260.9	7,400*
240	60	170	57.5	259.6	10,600*	59.3	257.9	9,000*	60.8	254.4	6,800*
240	60	180	55.2	252.7	9,600*	57.0	250.9	8,200*	58.5	247.3	6,000*
240	60	190	52.8	245.2	8,800*	54.6	243.3	7,400*	56.1	239.6	5,500*
240	60	200	50.4	237.0	8,000*	52.1	235.1	6,800*	53.6	231.2	5,100*
240	60	210	47.8	228.0	7,000*	49.5	226.0	6,100*	50.9	222.0	4,600*
240	60	220	45.2	218.2	6,000*	46.9	216.1	5,700*	48.2	211.9	4,200*
240	60	230	42.4	207.4	5,100*	44.0	205.2	5,200*	45.3	200.7	3,900*
240	60	240	39.4	195.4	4,300*	41.0	193.1	4,600*			
240	60	250	36.3	182.1	3,500*	37.8	179.6	3,700*			
240	60	260	32.8	167.0	2,800*						
240	60	270	29.0	149.7	2,100*						
240	80	60	81.1	324.7	17,800*						
240	80	70	79.3	322.7	17,500*	81.7	320.9	16,400*			
240	80	80	77.5	320.5	17,300*	79.8	318.6	16,000*			
240	80	90	75.6	317.8	17,000*	78.0	315.9	15,400*	80.2	312.2	12,000*
240	80	100	73.8	314.9	16,100*	76.1	312.9	13,600*	78.3	309.1	10,600*
240	80	110	71.9	311.5	14,600*	74.2	309.6	12,200*	76.4	305.7	9,400*
240	80	120	70.0	307.8	13,100*	72.3	305.9	11,000*	74.5	302.0	8,200*
240	80	130	68.1	303.8	12,000*	70.4	301.8	9,900*	72.5	297.8	7,300*
240	80	140	66.1	299.3	10,800*	68.4	297.3	8,900*	70.6	293.2	6,400*
240	80	150	64.2	294.4	10,000*	66.4	292.3	8,000*	68.5	288.2	5,800*
240	80	160	62.1	289.0	9,100*	64.4	286.9	7,200*	66.5	282.8	5,100*
240	80	170	60.1	283.2	8,300*	62.3	281.1	6,600*	64.4	276.8	4,500*
240	80	180	58.0	276.9	7,500*	60.2	274.7	5,900*	62.2	270.4	4,100*
240	80	190	55.8	270.1	6,900*	58.1	267.9	5,400*	60.0	263.4	3,700*

Boom Length (feet)	Jib Length (feet)	Jib Load Radius (feet)	Jib Angle to Boom								
			5 Degrees			15 Degrees			25 Degrees		
			Boom Angle (degree)	Jib Pt. Height (feet)	ABC+ A Cwt. (lbs.)	Boom Angle (degree)	Jib Pt. Height (feet)	ABC+ A Cwt. (lbs.)	Boom Angle (degree)	Jib Pt. Height (feet)	ABC+ A Cwt. (lbs.)
240	80	200	53.6	262.7	6,300*	55.8	260.4	5,000*	57.7	255.8	3,300*
240	80	210	51.3	254.7	5,700*	53.5	252.3	4,500*	55.4	247.5	3,100*
240	80	220	49.0	245.9	5,300*	51.1	243.5	4,100*	53.0	238.5	2,800*
240	80	230	46.5	236.5	4,800*	48.7	233.9	3,800*	50.4	228.7	2,500*
240	80	240	44.0	226.1	4,500*	46.1	223.4	3,400*	47.8	218.0	2,300*
240	80	250	41.3	214.7	3,900*	43.3	211.9	3,200*			
240	80	260	38.4	202.2	3,200*	40.4	199.2	2,900*			
240	80	270	35.4	188.3	2,500*	37.3	185.0	2,800*			
240	100	60	81.9	345.0	9,900*						
240	100	70	80.2	343.1	9,700*						
240	100	80	78.5	341.0	9,400*	81.3	338.8	8,400*			
240	100	90	76.8	338.5	9,200*	79.6	336.3	8,200*			
240	100	100	75.0	335.7	8,900*	77.8	333.5	8,000*	80.5	329.0	7,300*
240	100	110	73.3	332.6	8,600*	76.1	330.3	7,900*	78.7	325.8	6,600*
240	100	120	71.5	329.2	8,400*	74.3	326.9	7,700*	76.9	322.3	5,800*
240	100	130	69.7	325.4	8,200*	72.5	323.0	7,100*	75.1	318.4	5,000*
240	100	140	67.9	321.2	8,000*	70.7	318.8	6,400*	73.2	314.2	4,500*
240	100	150	66.1	316.6	7,300*	68.8	314.2	5,800*	71.3	309.5	4,000*
40	100	160	64.2	311.7	6,700*	66.9	309.3	5,200*	69.4	304.4	3,500*
240	100	170	62.3	306.3	6,100*	65.0	303.9	4,600*	67.5	298.9	3,100*
240	100	180	60.4	300.5	5,500*	63.0	298.0	4,200*	65.5	293.0	2,800*
240	100	190	58.4	294.2	5,100*	61.1	291.7	3,800*	63.4	286.5	2,500*
240	100	200	56.4	287.5	4,700*	59.0	284.8	3,500*	61.4	279.6	2,200*
240	100	210	54.3	280.2	4,300*	56.9	277.5	3,200*	59.2	272.1	2,000*
240	100	220	52.2	272.3	3,900*	54.8	269.5	2,900*			
240	100	230	50.0	263.8	3,600*	52.5	260.9	2,700*			
240	100	240	47.7	254.6	3,400*	50.2	251.6	2,400*			
240	100	250	45.3	244.6	3,000*	47.8	241.5	2,200*			
240	100	260	42.8	233.7	2,800*	45.3	230.5	2,100*			
240	100	270	40.2	221.8	2,700*						
240	100	280	37.5	208.8	2,200*						

LS-248H II Tubular Jib Capacity Notes:

- Capacities are for an LS-248H II with "ABC" (96,430 lbs. - 43 741 kg) upper counterweight, "A" (48,000 lbs. - 21 773 kg) lower auxiliary counterweight, 30' (9.14 m) live mast, and 1" (25 mm) diameter pendants.
- Capacities are shown in thousands of pounds and are not more than 75% of the tipping loads with the machine standing level on a firm supporting surface.
- Capacities are limited to a Link-Belt 68" x 80" (1.73 x 2.03 m) cross-section open throat tube boom and a 24" x 32" (.61 x .81 m) cross-section tube jib with a jib strut properly assembled.
- Two parts of 1" (25 mm) diameter L-BS Type "RB" wire rope are required for maximum lift.
Capacities are for 30' (9.14 m) thru 100' (30.48 m) jib lengths.
- The maximum boom and jib combination is 240' (73.15 m) boom + 100' (30.48 m) jib.
- The least stable condition is over the side.
- Booms must be erected and lowered over the end.
- Those capacities followed by an asterisk (*) are governed by factors other than those that would cause a tipping condition.
- A deduction must be made from the jib capacities for weights of hook blocks, hooks, slings, grapples, load weighing devices, etc.
- When using the main hook, while a jib is attached, reduce the main boom capacities by the following values:
 - 30' (9.14 m) jib - 2,600 lbs. (1 179 kg)
 - 40' (12.19 m) jib - 3,000 lbs. (1 361 kg)
 - 50' (15.24 m) jib - 3,400 lbs. (1 542 kg)
 - 60' (18.29 m) jib - 3,800 lbs. (1 724 kg)
 - 70' (21.34 m) jib - 4,200 lbs. (1 905 kg)
 - 80' (24.38 m) jib - 4,600 lbs. (2 087 kg)
 - 90' (27.43 m) jib - 5,000 lbs. (2 268 kg)
 - 100' (30.48 m) jib - 5,400 lbs. (2 449 kg)
- Refer to all notes on applicable lifting crane capacities in the crane rating manual in addition to these notes.
- These capacities apply only to the crane as originally manufactured and normally equipped by Link-Belt Construction Equipment Company.
- Not all jib capacity combinations shown, refer to Crane Rating Manual

LS-248H II Tube Boom Working Range



Gibbons Erectors, Inc.
 8019 Towhee Road
 Parker, CO 80134

Link-Belt Construction Equipment Company Lexington, Kentucky

A unit of Sumitomo Construction Machinery Co., Ltd.

Link-Belt is a registered trademark. Copyright 1998. All rights reserved. We are constantly improving our products and therefore reserve the right to change designs and specifications.